



**SUPERIOR**

GRADNJA

---

## Superior, ukratko.

Superior Gradnja d.o.o., osnovana je 2021. godine, u privatnoj svojini, sa sjedištem u Niksicu. Sestrinska je kompanija firme koja više od 12 godina posluje na teritoriji SAD-a. Naša filozofija poslovanja je da kvalitet ne dolazi slučajno nego kao rezultat visokih ciljeva, iskrenog truda, inteligentnih odluka i spretnog izvođenja. Misija je da klijenti budu zadovoljni kvalitetom naših objekata u svakom pogledu, da u njima nadju dom i grade uspomene, zato tezimo vrhunskom kvalitetu te za izvođjace i materijale biramo samo najbolje.

**Kvalitet, dakle, nije čin,  
već navika - Aristotel**



Osnivač kompanije



**SUPERIOR**

GRADNJA

Superior Residence 2



# Superior Residence 2

Tivat, Crna Gora



**SUPERIOR**  
GRADNJA

Gradimo viziju.







Vaša buduća adresa

42°25'22.9"N 18°42'55.0"E



OVDJE  
se nalazimo

Glavni put  
198m

Jadransko  
more  
641m





1.9km



Aerodrom Tivat



Superior Residence

2.4km



Osnovna škola  
Bolnica

2.9km



Porto Montenegro



**SUPERIOR**

GRADNJA

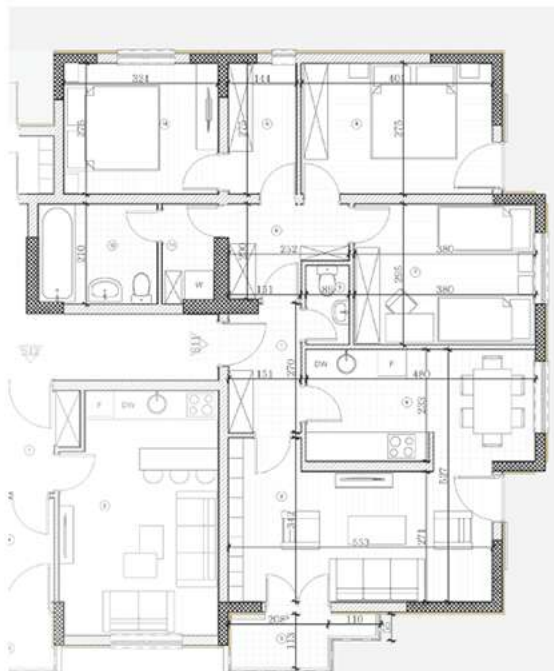




- |                         |                      |
|-------------------------|----------------------|
| 1. hodnik               | 4,40 m <sup>2</sup>  |
| 2. dnevna soba          | 16,60 m <sup>2</sup> |
| 3. terasa               | 3,15 m <sup>2</sup>  |
| 4. kuhinja i trpezarija | 11,38 m <sup>2</sup> |
| 5. toilet               | 1,46 m <sup>2</sup>  |
| 6. degažman             | 4,74 m <sup>2</sup>  |
| 7. spavaća soba 1       | 11,07 m <sup>2</sup> |
| 8. spavaća soba 2       | 10,86 m <sup>2</sup> |
| 9. garderober           | 3,82 m <sup>2</sup>  |
| 10. spavaća soba 3      | 9,58 m <sup>2</sup>  |
| 11. vešeraj             | 2,49 m <sup>2</sup>  |
| 12. kupatilo            | 5,16 m <sup>2</sup>  |

**Neto**

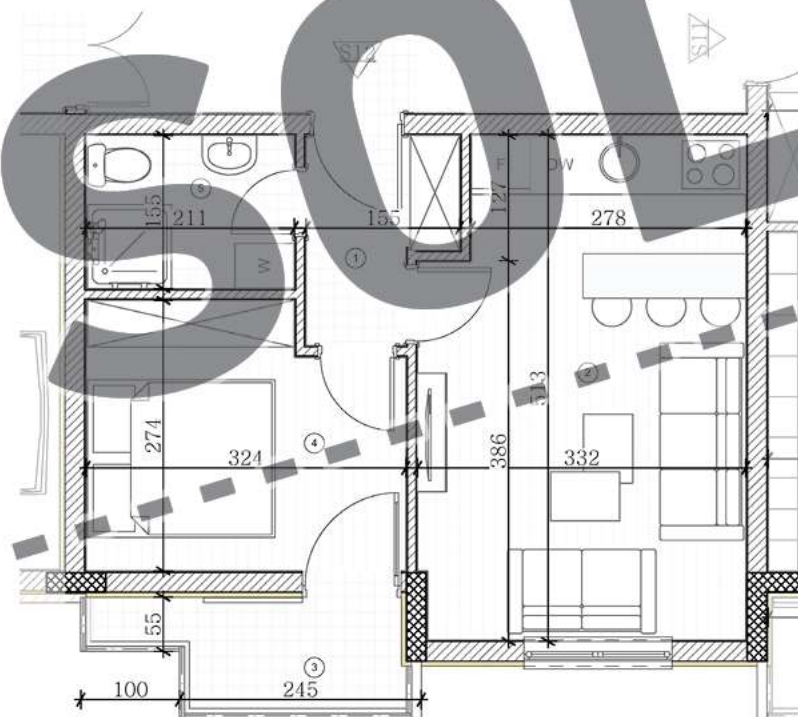
**84,71 m<sup>2</sup>**





- 1. hodnik 4,08 m<sup>2</sup>
- 2. trpezarija i dnevna soba 13,86 m<sup>2</sup>
- 3. kuhinja 4,16 m<sup>2</sup>
- 4. terasa 2,81 m<sup>2</sup>
- 5. spavaća soba 8,6 m<sup>2</sup>
- 6. kupatilo 3,02 m<sup>2</sup>

Neto  
**36,00 m<sup>2</sup>**

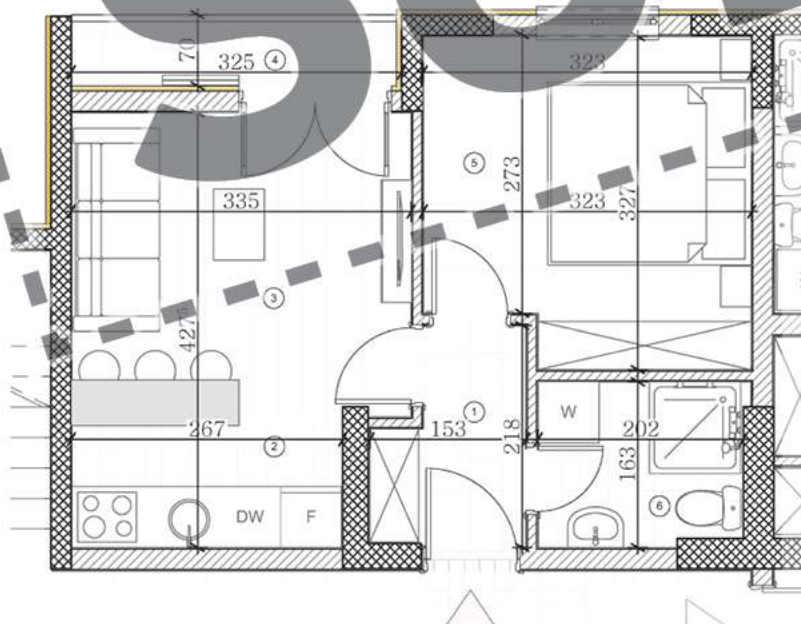






- |                             |                     |
|-----------------------------|---------------------|
| 1. hodnik                   | 3,24 m <sup>2</sup> |
| 2. kuhinja                  | 3,60 m <sup>2</sup> |
| 3. trpezarija i dnevna soba | 10 m <sup>2</sup>   |
| 4. terasa                   | 2,56 m <sup>2</sup> |
| 5. spavaća soba             | 9,95 m <sup>2</sup> |
| 6. kupatilo                 | 3,41 m <sup>2</sup> |

**Neto**  
**32,76 m<sup>2</sup>**

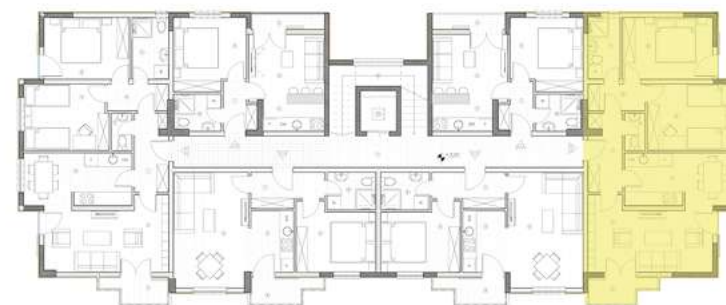
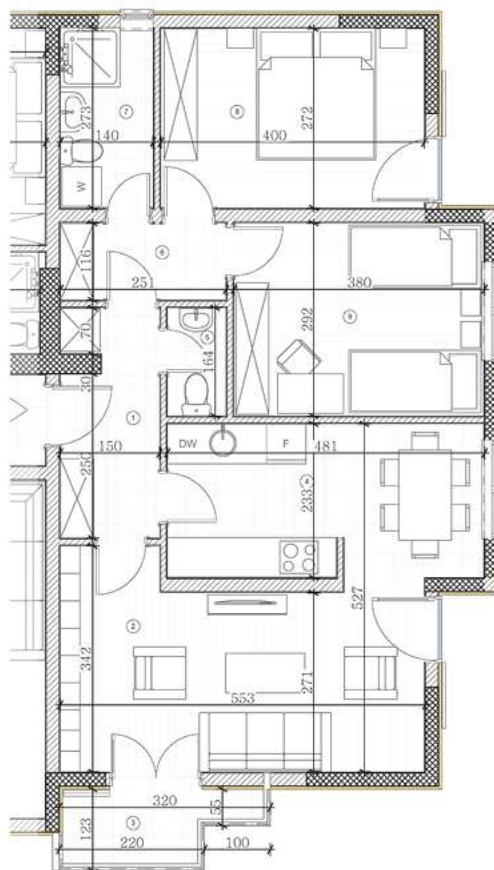






- |                         |                      |
|-------------------------|----------------------|
| 1. hodnik               | 5,54 m <sup>2</sup>  |
| 2. dnevna soba          | 16,60 m <sup>2</sup> |
| 3. terasa               | 3,15 m <sup>2</sup>  |
| 4. kuhinja i trpezarija | 11,38 m <sup>2</sup> |
| 5. toalet               | 1,46 m <sup>2</sup>  |
| 6. degažman             | 3,36 m <sup>2</sup>  |
| 7. spavaća soba 1       | 10,86 m <sup>2</sup> |
| 8. spavaća soba 2       | 11,07 m <sup>2</sup> |
| 9. kupatilo             | 3,82 m <sup>2</sup>  |

**Neto**  
**67,24 m<sup>2</sup>**



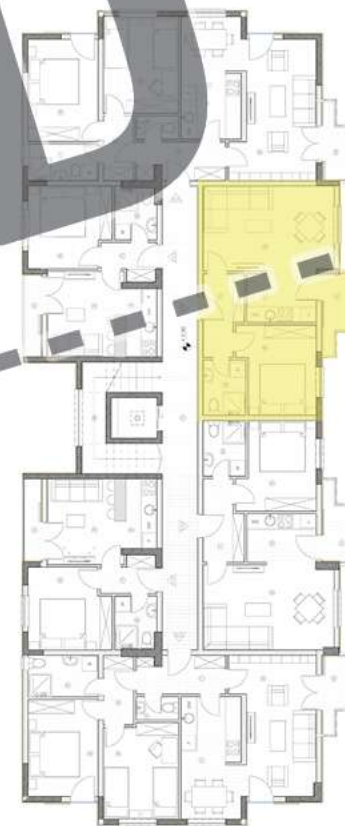
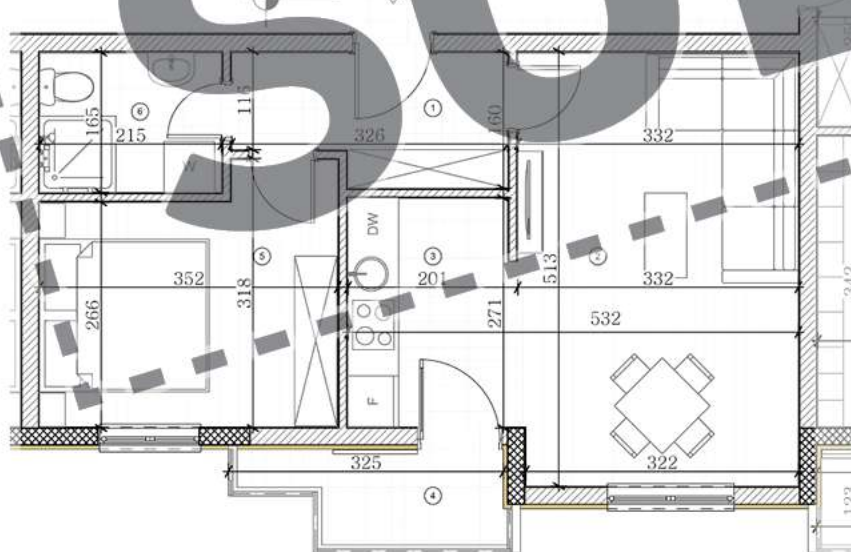




- 1. hodnik 4,98 m<sup>2</sup>
- 2. trpezarija i dnevna soba 16,9 m<sup>2</sup>
- 3. kuhinja 5,32 m<sup>2</sup>
- 4. terasa 3,19 m<sup>2</sup>
- 5. spavaća soba 9,95 m<sup>2</sup>
- 6. kupatilo 3,55 m<sup>2</sup>

Neto

**43,89 m<sup>2</sup>**



**SOLD**

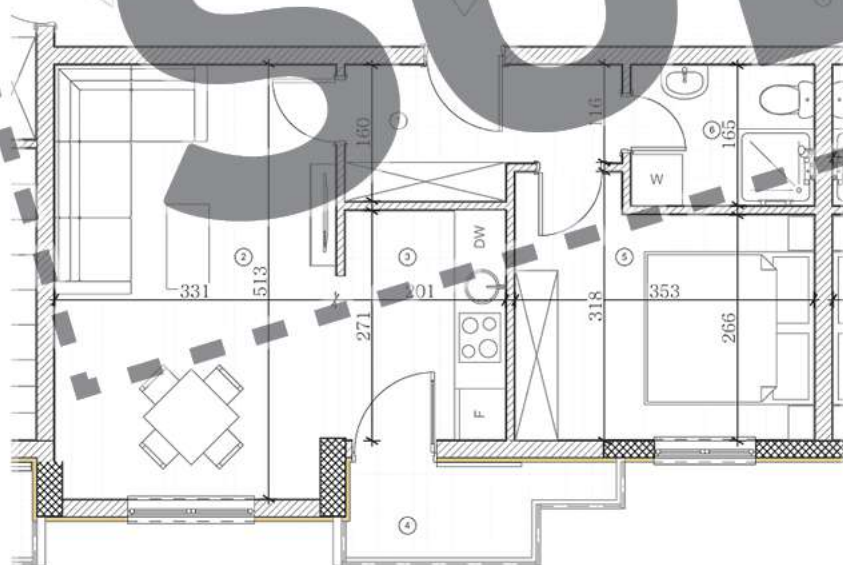




- 1. hodnik 4,98 m<sup>2</sup>
- 2. trpezarija i dnevna soba 16,9 m<sup>2</sup>
- 3. kuhinja 5,32 m<sup>2</sup>
- 4. terasa 3,19 m<sup>2</sup>
- 5. spavaća soba 9,95 m<sup>2</sup>
- 6. kupatilo 3,55 m<sup>2</sup>

Neto

**43,89 m<sup>2</sup>**

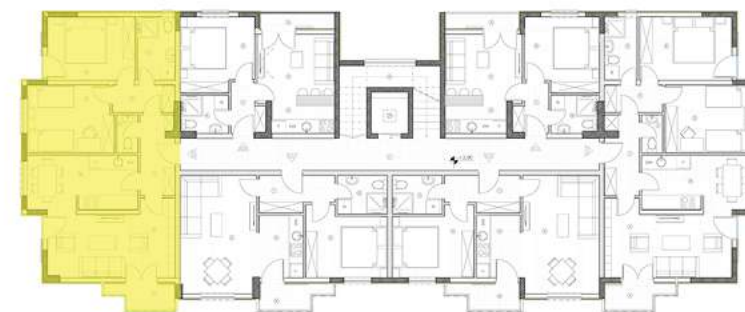
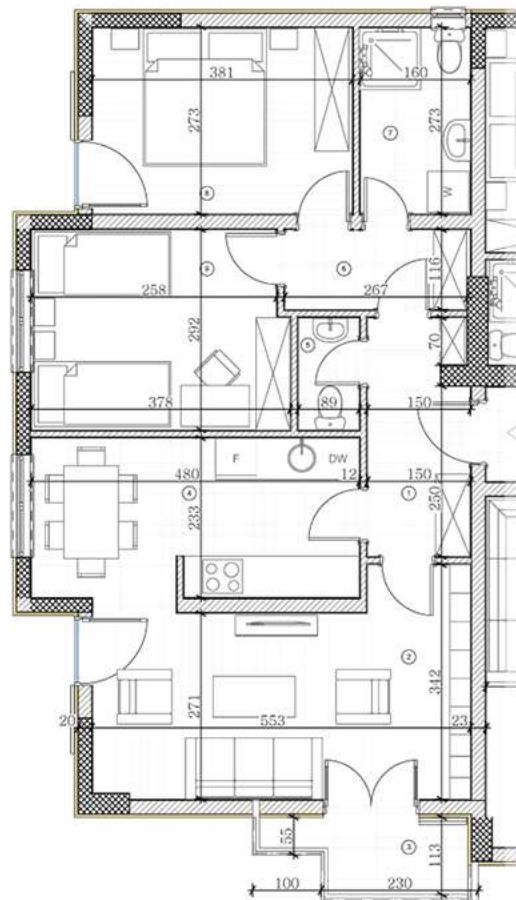






- |                         |                      |
|-------------------------|----------------------|
| 1. hodnik               | 5,56 m <sup>2</sup>  |
| 2. dnevna soba          | 16,01 m <sup>2</sup> |
| 3. terasa               | 3,15 m <sup>2</sup>  |
| 4. kuhinja i trpezarija | 11,41 m <sup>2</sup> |
| 5. toilet               | 1,46 m <sup>2</sup>  |
| 6. degažman             | 3,59 m <sup>2</sup>  |
| 7. kupatilo             | 4,37 m <sup>2</sup>  |
| 8. spavaća soba 1       | 10,32 m <sup>2</sup> |
| 9. spavaća soba 2       | 10,81 m <sup>2</sup> |

**Neto**  
**66,68 m<sup>2</sup>**

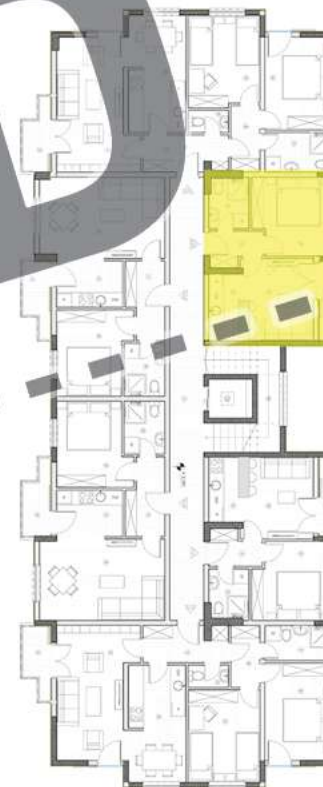
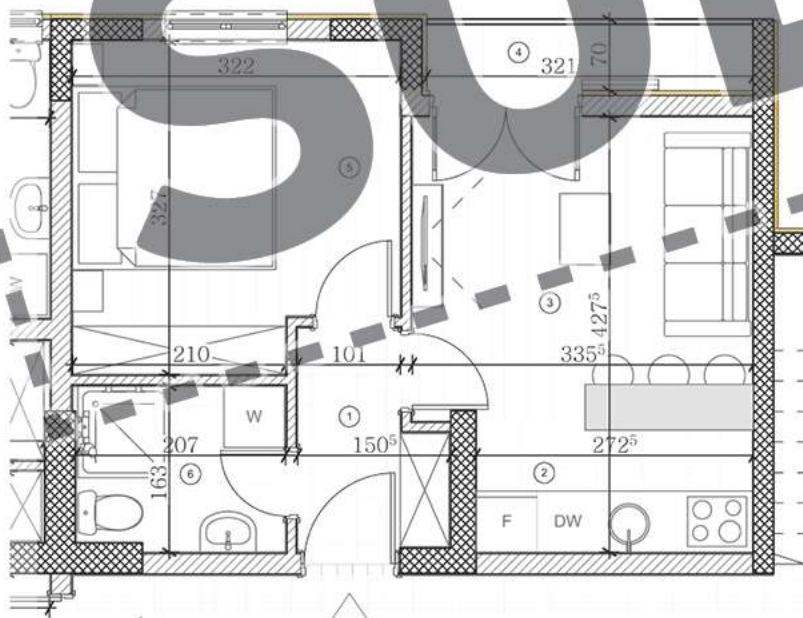






- |                             |                     |
|-----------------------------|---------------------|
| 1. hodnik                   | 3,16 m <sup>2</sup> |
| 2. kuhinja                  | 3,50 m <sup>2</sup> |
| 3. trpezarija i dnevna soba | 10 m <sup>2</sup>   |
| 4. terasa                   | 2,64 m <sup>2</sup> |
| 5. spavaća soba             | 9,92 m <sup>2</sup> |
| 6. kupatilo                 | 3,32 m <sup>2</sup> |

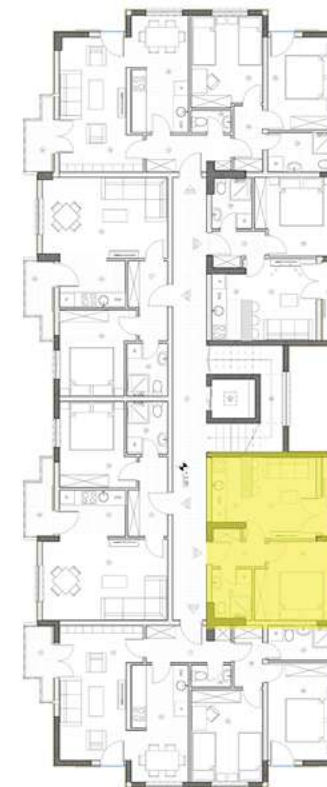
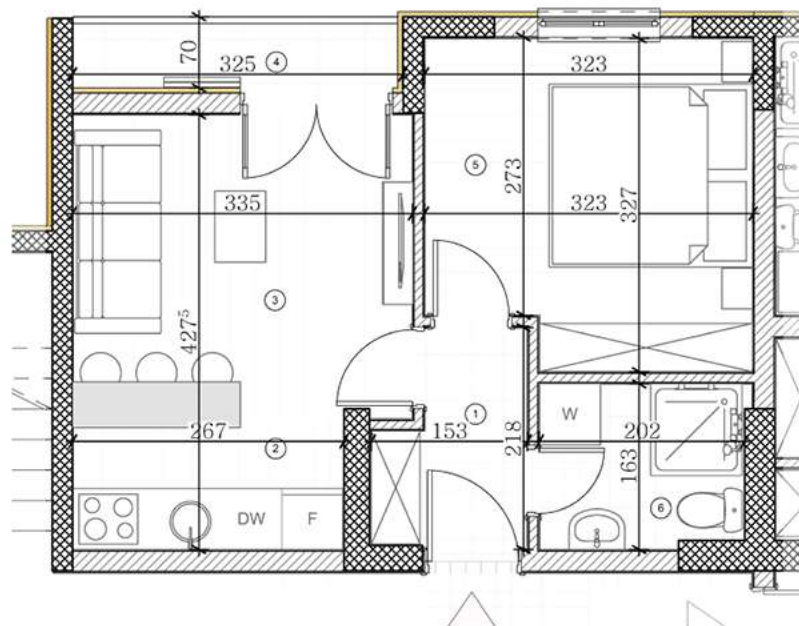
Neto  
**32,54 m<sup>2</sup>**







- |                             |                     |
|-----------------------------|---------------------|
| 1. hodnik                   | 3,24 m <sup>2</sup> |
| 2. kuhinja                  | 3,60 m <sup>2</sup> |
| 3. trpezarija i dnevna soba | 10 m <sup>2</sup>   |
| 4. terasa                   | 2,56 m <sup>2</sup> |
| 5. spavaća soba             | 9,95 m <sup>2</sup> |
| 6. kupatilo                 | 3,41 m <sup>2</sup> |



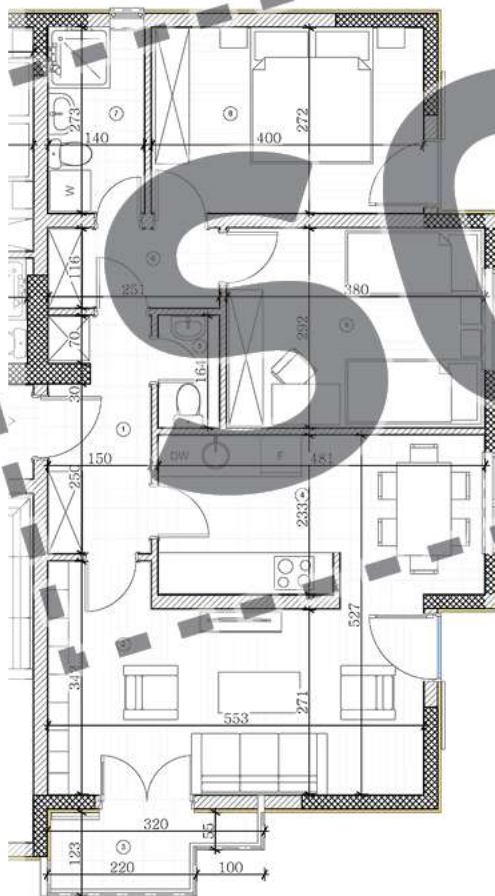
**Neto**  
**32,76 m<sup>2</sup>**





- |                         |                      |
|-------------------------|----------------------|
| 1. hodnik               | 5,54 m <sup>2</sup>  |
| 2. dnevna soba          | 16,6 m <sup>2</sup>  |
| 3. terasa               | 3,15 m <sup>2</sup>  |
| 4. kuhinja i trpezarija | 11,38 m <sup>2</sup> |
| 5. toilet               | 1,46 m <sup>2</sup>  |
| 6. degažman             | 3,36 m <sup>2</sup>  |
| 7. kupatilo             | 3,82 m <sup>2</sup>  |
| 8. spavaća soba 1       | 10,86 m <sup>2</sup> |
| 9. spavaća soba 2       | 11,07 m <sup>2</sup> |

**Neto**  
**67,24 m<sup>2</sup>**







- 1. hodnik 4,98 m<sup>2</sup>
- 2. trpezarija i dnevna soba 16,9 m<sup>2</sup>
- 3. kuhinja 5,32 m<sup>2</sup>
- 4. terasa 3,19 m<sup>2</sup>
- 5. spavaća soba 9,95 m<sup>2</sup>
- 6. kupatilo 3,55 m<sup>2</sup>

Neto  
**43,89 m<sup>2</sup>**

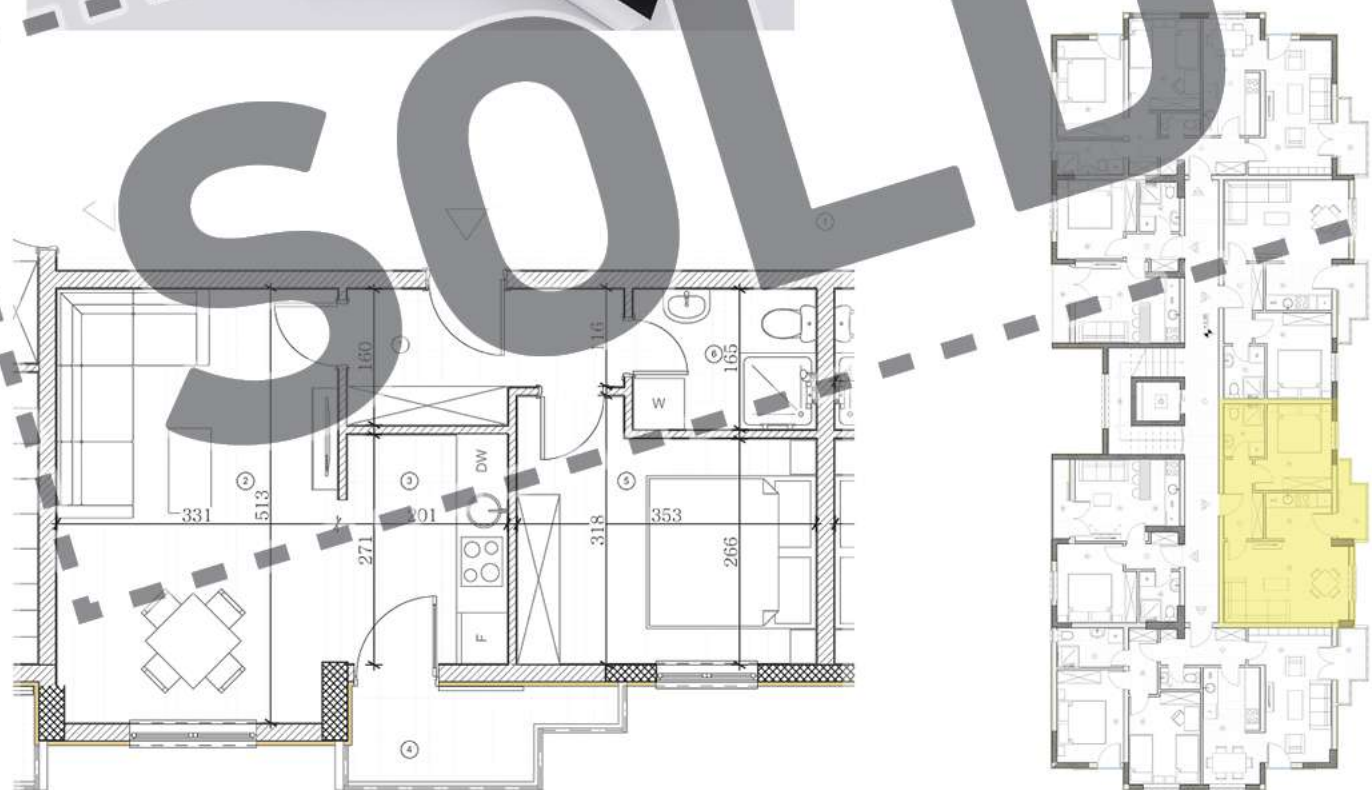






- |                             |                     |
|-----------------------------|---------------------|
| 1. hodnik                   | 4,98 m <sup>2</sup> |
| 2. trpezarija i dnevna soba | 16,9 m <sup>2</sup> |
| 3. kuhinja                  | 5,32 m <sup>2</sup> |
| 4. terasa                   | 3,19 m <sup>2</sup> |
| 5. spavaća soba             | 9,95 m <sup>2</sup> |
| 6. kupatilo                 | 3,55 m <sup>2</sup> |

Neto  
**43,89 m<sup>2</sup>**

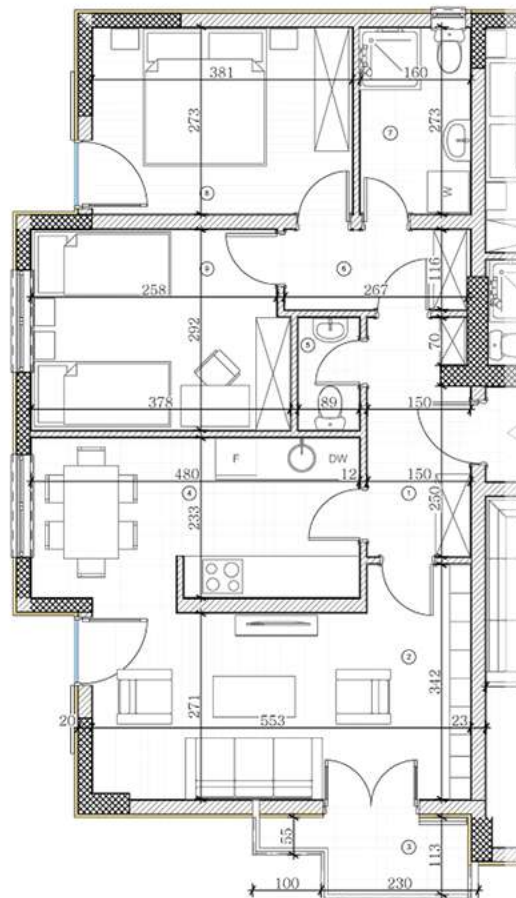






- |                         |                      |
|-------------------------|----------------------|
| 1. hodnik               | 5,56 m <sup>2</sup>  |
| 2. dnevna soba          | 16,01 m <sup>2</sup> |
| 3. terasa               | 3,15 m <sup>2</sup>  |
| 4. kuhinja i trpezarija | 11,41 m <sup>2</sup> |
| 5. toalet               | 1,46 m <sup>2</sup>  |
| 6. degažman             | 3,59 m <sup>2</sup>  |
| 7. kupatilo             | 4,37 m <sup>2</sup>  |
| 8. spavaća soba 1       | 10,32 m <sup>2</sup> |
| 9. spavaća soba 2       | 10,81 m <sup>2</sup> |

**Neto**  
**66,68 m<sup>2</sup>**

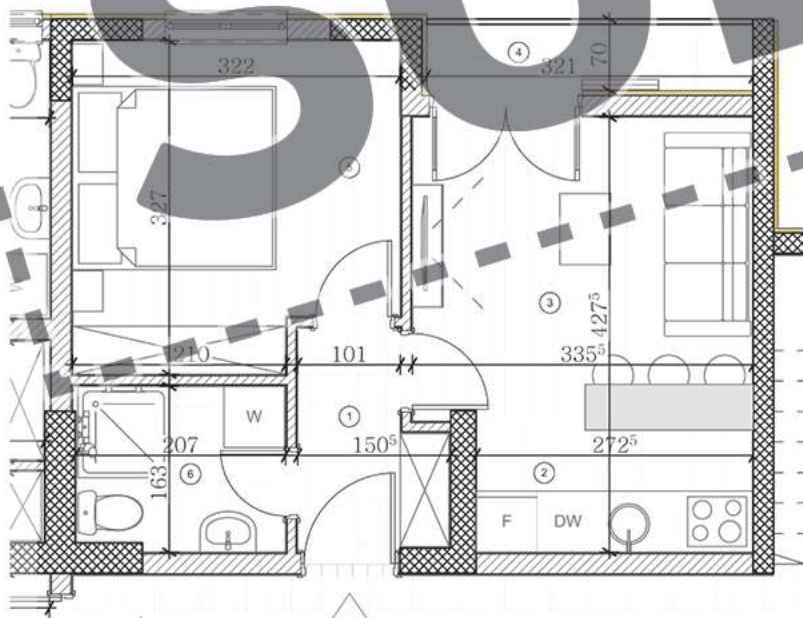






- |                             |                     |
|-----------------------------|---------------------|
| 1. hodnik                   | 3,16 m <sup>2</sup> |
| 2. kuhinja                  | 3,50 m <sup>2</sup> |
| 3. trpezarija i dnevna soba | 10 m <sup>2</sup>   |
| 4. terasa                   | 2,64 m <sup>2</sup> |
| 5. spavaća soba             | 9,92 m <sup>2</sup> |
| 6. kupatilo                 | 3,32 m <sup>2</sup> |

Neto  
**32,54 m<sup>2</sup>**

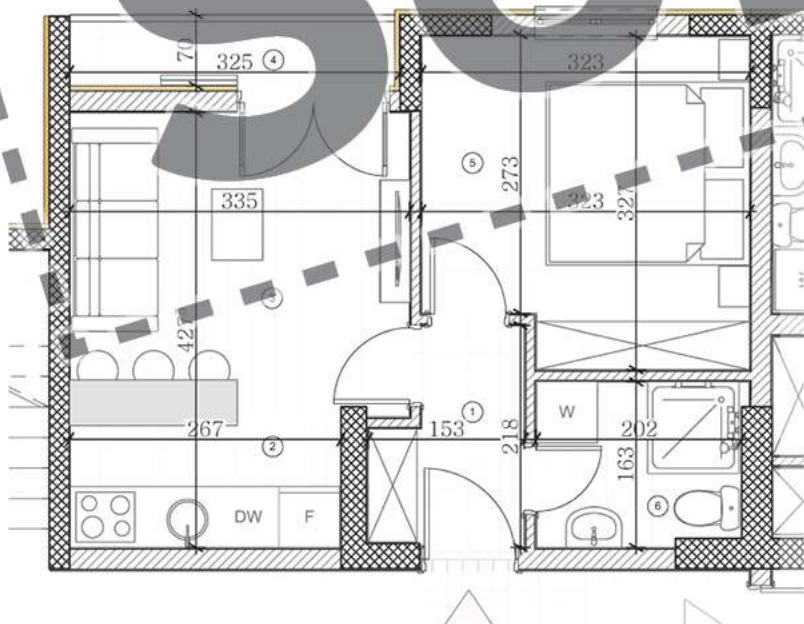






- |                             |                     |
|-----------------------------|---------------------|
| 1. hodnik                   | 3,24 m <sup>2</sup> |
| 2. kuhinja                  | 3,60 m <sup>2</sup> |
| 3. trpezarija i dnevna soba | 10 m <sup>2</sup>   |
| 4. terasa                   | 2,56 m <sup>2</sup> |
| 5. spavaća soba             | 9,95 m <sup>2</sup> |
| 6. kupatilo                 | 3,41 m <sup>2</sup> |

**Neto**  
**32,76 m<sup>2</sup>**



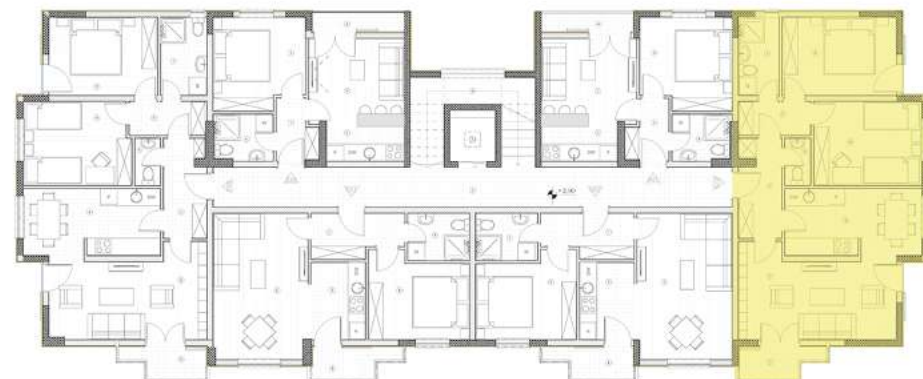
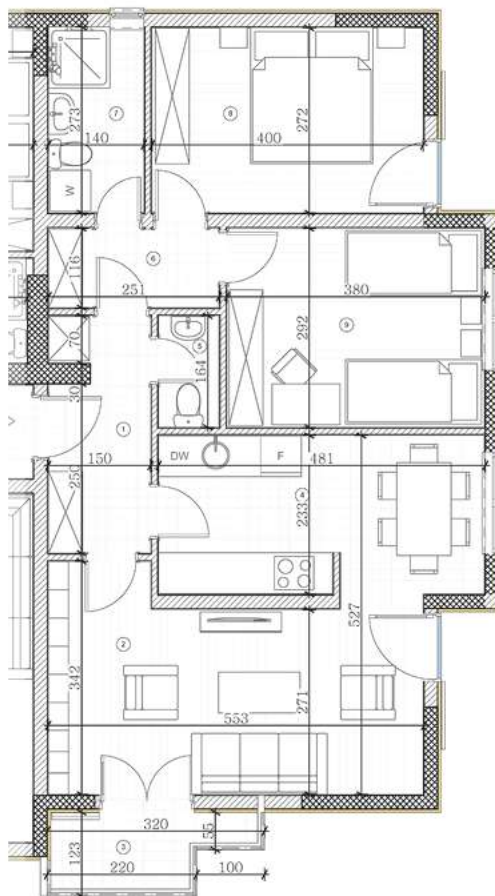
**SOLD**





- |                         |                      |
|-------------------------|----------------------|
| 1. hodnik               | 5,54 m <sup>2</sup>  |
| 2. dnevna soba          | 16,6 m <sup>2</sup>  |
| 3. terasa               | 3,15 m <sup>2</sup>  |
| 4. kuhinja i trpezarija | 11,38 m <sup>2</sup> |
| 5. toalet               | 1,46 m <sup>2</sup>  |
| 6. degažman             | 3,36 m <sup>2</sup>  |
| 7. kupatilo             | 3,82 m <sup>2</sup>  |
| 8. spavaća soba 1       | 10,86 m <sup>2</sup> |
| 9. spavaća soba 2       | 11,07 m <sup>2</sup> |

Neto  
**67,24 m<sup>2</sup>**

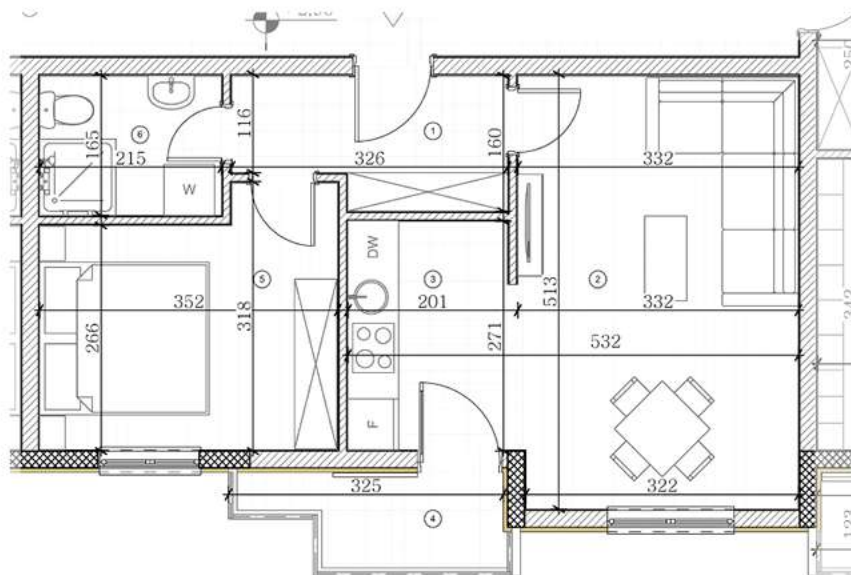






- 1. hodnik 4,98 m<sup>2</sup>
- 2. trpezarija i dnevna soba 16,9 m<sup>2</sup>
- 3. kuhinja 5,32 m<sup>2</sup>
- 4. terasa 3,19 m<sup>2</sup>
- 5. spavaća soba 9,95 m<sup>2</sup>
- 6. kupatilo 3,55 m<sup>2</sup>

Neto  
**43,89 m<sup>2</sup>**



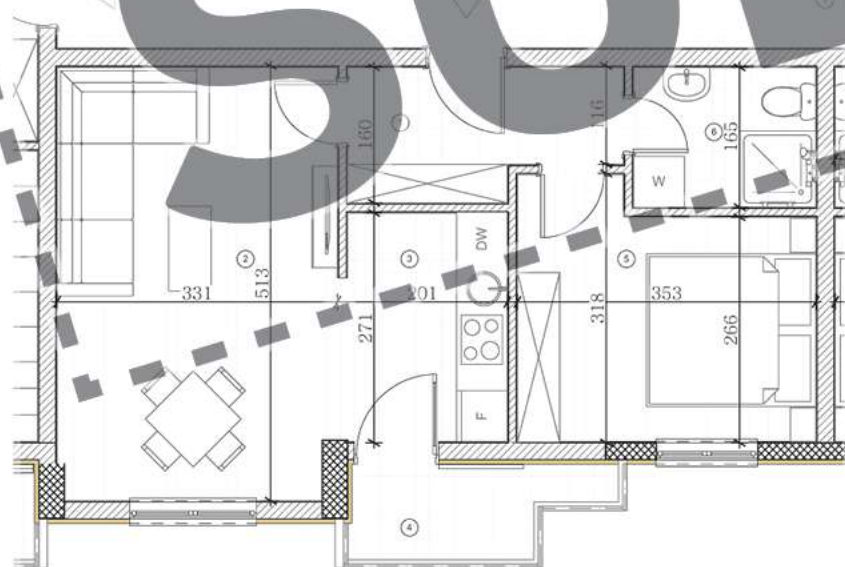




- 1. hodnik 4,98 m<sup>2</sup>
- 2. trpezarija i dnevna soba 16,9 m<sup>2</sup>
- 3. kuhinja 5,32 m<sup>2</sup>
- 4. terasa 3,19 m<sup>2</sup>
- 5. spavaća soba 9,95 m<sup>2</sup>
- 6. kupatilo 3,55 m<sup>2</sup>

Neto

**43,89 m<sup>2</sup>**



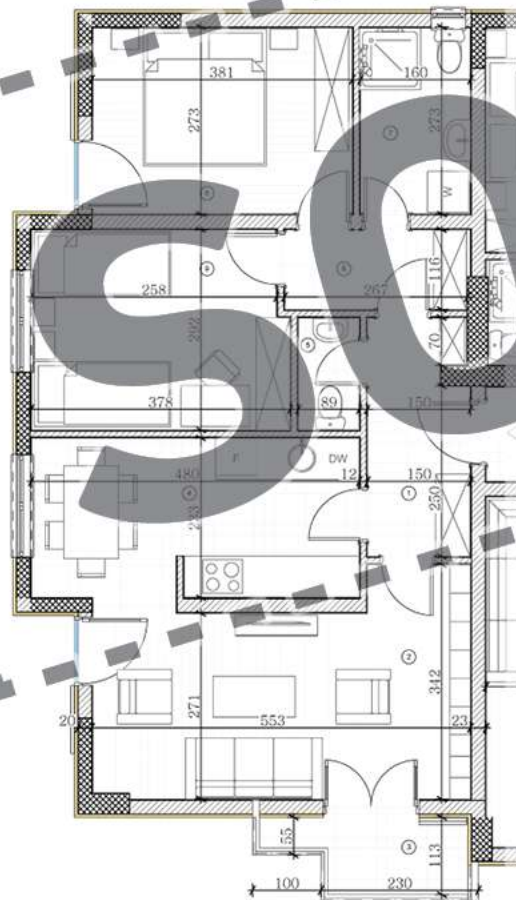
**SOLD**





- |                         |                      |
|-------------------------|----------------------|
| 1. hodnik               | 5,56 m <sup>2</sup>  |
| 2. dnevna soba          | 16,01 m <sup>2</sup> |
| 3. terasa               | 3,15 m <sup>2</sup>  |
| 4. kuhinja i trpezarija | 11,41 m <sup>2</sup> |
| 5. toalet               | 1,46 m <sup>2</sup>  |
| 6. degažman             | 3,59 m <sup>2</sup>  |
| 7. kupatilo             | 4,37 m <sup>2</sup>  |
| 8. spavaća soba 1       | 10,32 m <sup>2</sup> |
| 9. spavaća soba 2       | 10,81 m <sup>2</sup> |

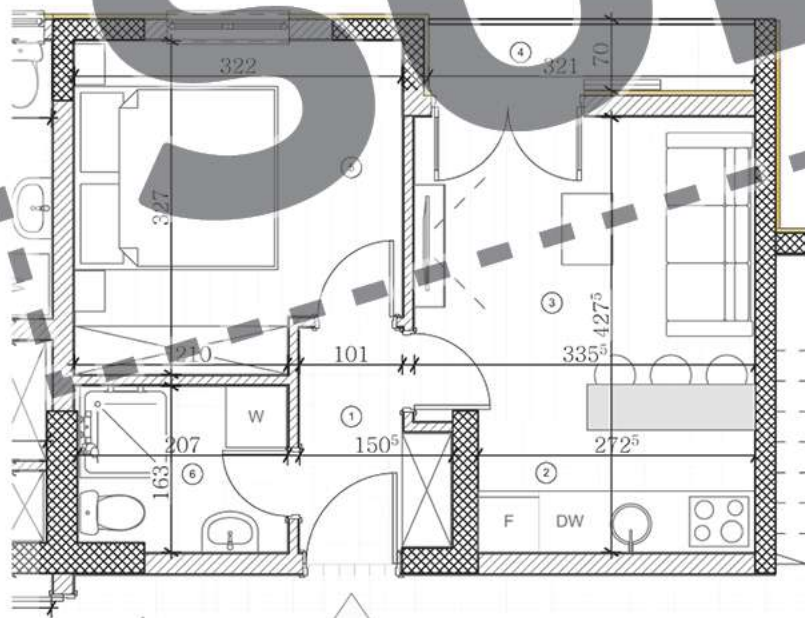
**Neto**  
**66,68 m<sup>2</sup>**





- |                             |                     |
|-----------------------------|---------------------|
| 1. hodnik                   | 3,16 m <sup>2</sup> |
| 2. kuhinja                  | 3,50 m <sup>2</sup> |
| 3. trpezarija i dnevna soba | 10 m <sup>2</sup>   |
| 4. terasa                   | 2,64 m <sup>2</sup> |
| 5. spavaća soba             | 9,92 m <sup>2</sup> |
| 6. kupatilo                 | 3,32 m <sup>2</sup> |

Neto  
**32,54 m<sup>2</sup>**



**SOLD**





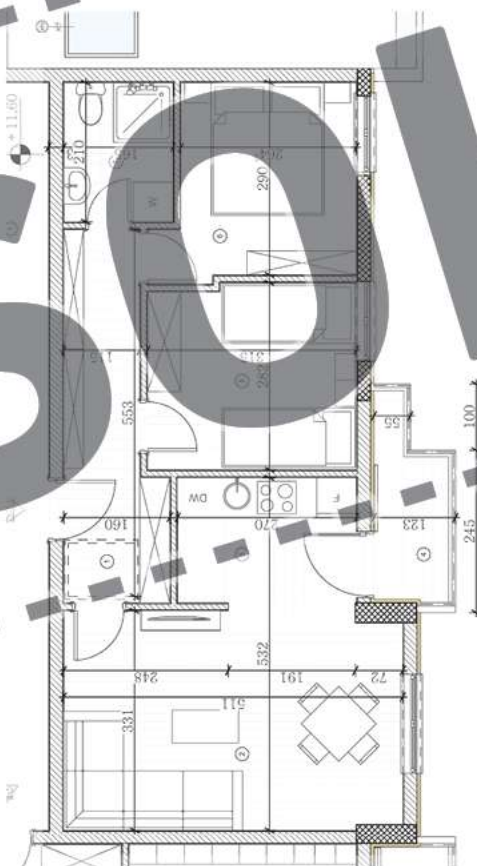
- |                             |                      |
|-----------------------------|----------------------|
| 1. hodnik                   | 7,62 m <sup>2</sup>  |
| 2. trpezarija i dnevna soba | 16,76 m <sup>2</sup> |
| 3. kuhinja                  | 5,32 m <sup>2</sup>  |
| 4. terasa                   | 3,19 m <sup>2</sup>  |
| 5. spavaća soba             | 8,44 m <sup>2</sup>  |
| 6. spavaća soba             | 8,55 m <sup>2</sup>  |
| 7. kupatilo                 | 3,55 m <sup>2</sup>  |

Neto

**53,43 m<sup>2</sup>**



**SOLD**

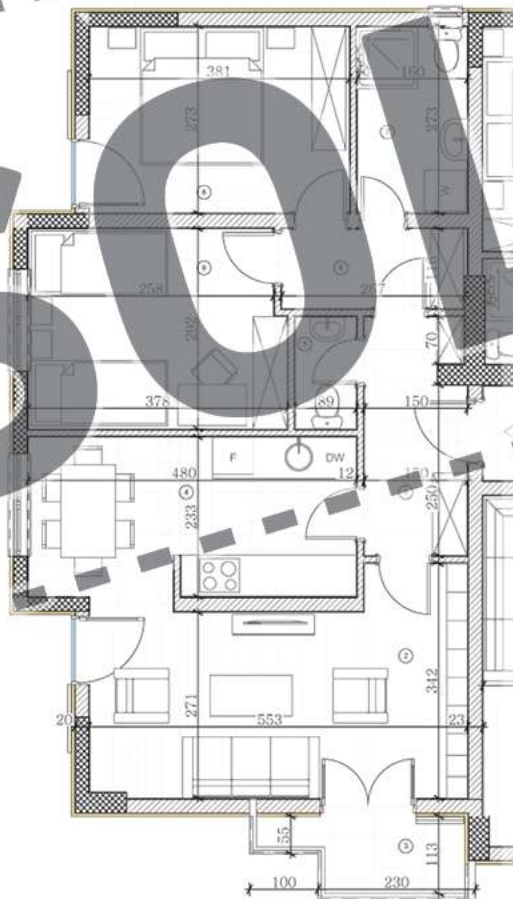




- |                         |                      |
|-------------------------|----------------------|
| 1. hodnik               | 5,56 m <sup>2</sup>  |
| 2. dnevna soba          | 16,01 m <sup>2</sup> |
| 3. terasa               | 3,15 m <sup>2</sup>  |
| 4. kuhinja i trpezarija | 11,41 m <sup>2</sup> |
| 5. toilet               | 1,46 m <sup>2</sup>  |
| 6. degažman             | 3,59 m <sup>2</sup>  |
| 7. kupatilo             | 4,37 m <sup>2</sup>  |
| 8. spavaća soba 1       | 10,32 m <sup>2</sup> |
| 9. spavaća soba 2       | 10,81 m <sup>2</sup> |

Neto

**66,68 m<sup>2</sup>**





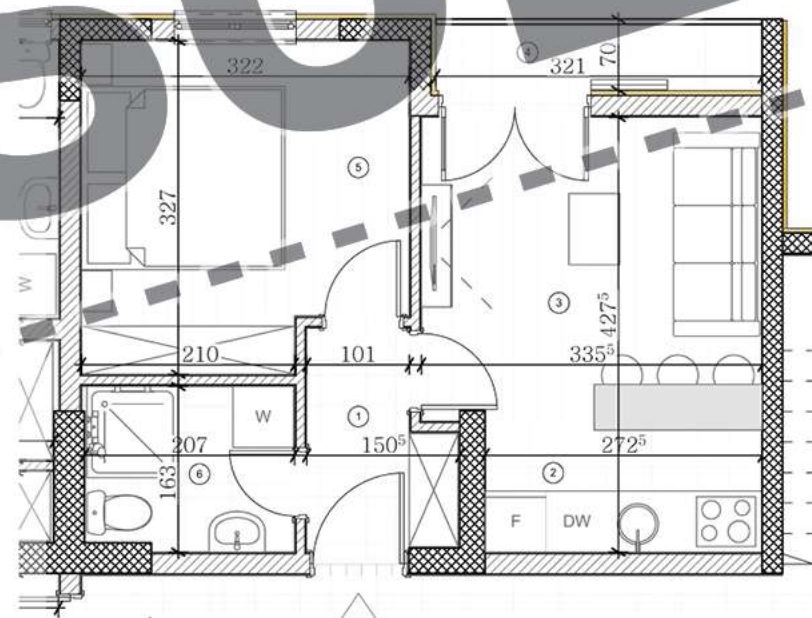


- 1. hodnik 3,16 m<sup>2</sup>
- 2. kuhinja 3,50 m<sup>2</sup>
- 3. trpezarija i dnevna soba 10 m<sup>2</sup>
- 4. terasa 2,64 m<sup>2</sup>
- 5. spavaća soba 9,92 m<sup>2</sup>
- 6. kupatilo 3,32 m<sup>2</sup>

Neto  
**32,54 m<sup>2</sup>**



**SOLD**



**“Kvalitet ostaje dugo nakon zaboravljanja cijene”**

**Henry Royce** - britanski inženjer i osnivač Rollse-Royce-a

[www.superiorgradnja.com](http://www.superiorgradnja.com)  
[info@superiorgradnja.com](mailto:info@superiorgradnja.com)

Tu smo za Vas.  
**+382 67 20 30 40**