



SUPERIOR

GRADNJA

Superior, ukratko.

Superior Gradnja d.o.o., osnovana je 2021. godine, u privatnoj svojini, sa sjedištem u Niksici. Sestrinska je kompanija firme koja više od 12 godina posluje na teritoriji SAD-a. Naša filozofija poslovanja je da kvalitet ne dolazi slučajno nego kao rezultat visokih ciljeva, iskrenog truda, inteligentnih odluka i spretnog izvođenja. Misija je da klijenti budu zadovoljni kvalitetom naših objekata u svakom pogledu, da u njima nadju dom i grade uspomene, zato tezimo vrhunskom kvalitetu te za izvodjace i materijale biramo samo najbolje.

**Kvalitet, dakle, nije čin,
već navika - Aristotel**



Osnivač kompanije



SUPERIOR
GRADNJA

Superior Residence 2

Superior Residence 2

Tivat, Crna Gora



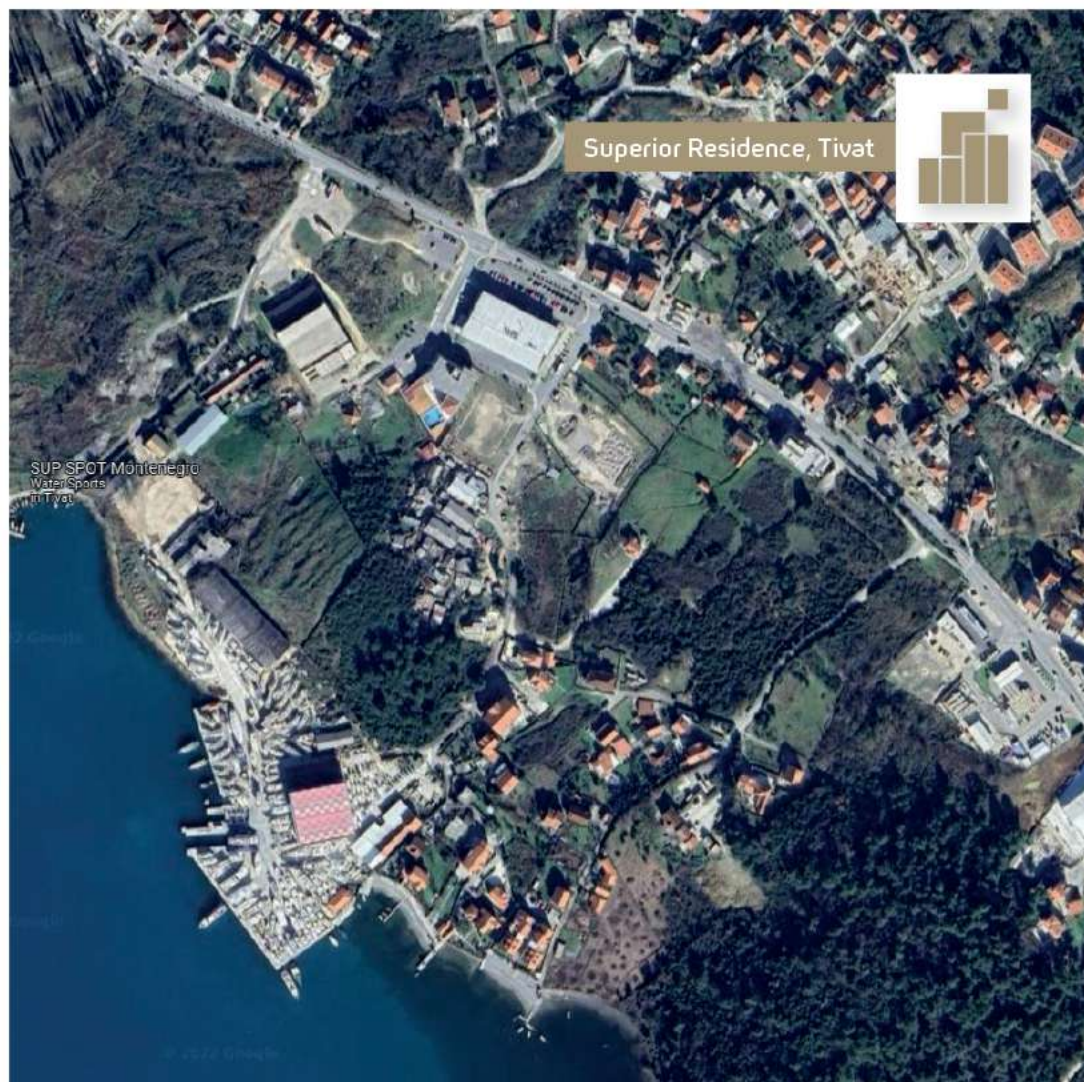
SUPERIOR
GRADNJA

Gradimo viziju.



Vaša buduća adresa

42°25'22.9"N 18°42'55.0"E



OVDJE
se nalazimo

Glavni put
198m

Jadransko
more
641m



1.9km
Aerodrom Tivat

Superior Residence

2.4km
Osnovna škola
Bolnica

2.9km
Porto Montenegro



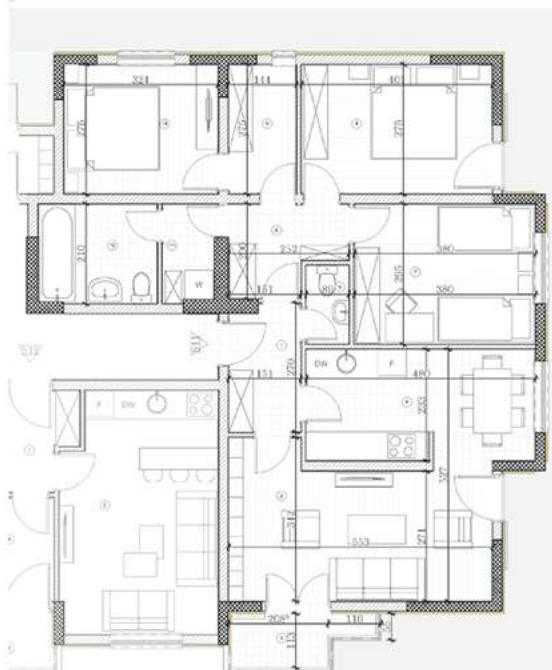
SUPERIOR
GRADNJA



- | | |
|-------------------------|----------------------|
| 1. hodnik | 4,40 m ² |
| 2. dnevna soba | 16,60 m ² |
| 3. terasa | 3,15 m ² |
| 4. kuhinja i trpezarija | 11,38 m ² |
| 5. toilet | 1,46 m ² |
| 6. degažman | 4,74 m ² |
| 7. spavaća soba 1 | 11,07 m ² |
| 8. spavaća soba 2 | 10,86 m ² |
| 9. garderober | 3,82 m ² |
| 10. spavaća soba 3 | 9,58 m ² |
| 11. vešeraj | 2,49 m ² |
| 12. kupatilo | 5,16 m ² |

Neto

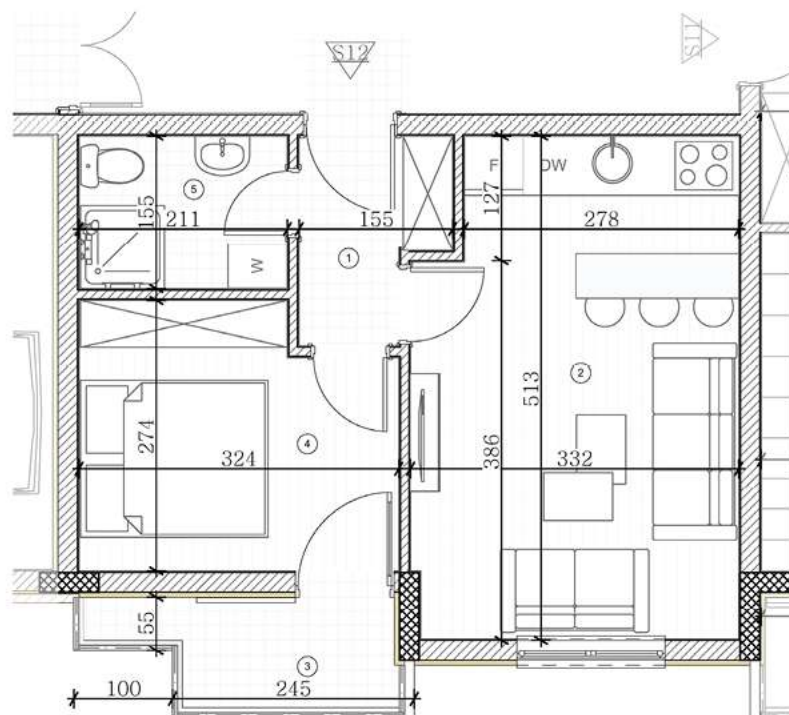
84,71 m²





- | | |
|-----------------------------|----------------------|
| 1. hodnik | 4,08 m ² |
| 2. trpezarija i dnevna soba | 13,86 m ² |
| 3. kuhinja | 4,16 m ² |
| 4. terasa | 2,81 m ² |
| 5. spavaća soba | 8,6 m ² |
| 6. kupatilo | 3,02 m ² |

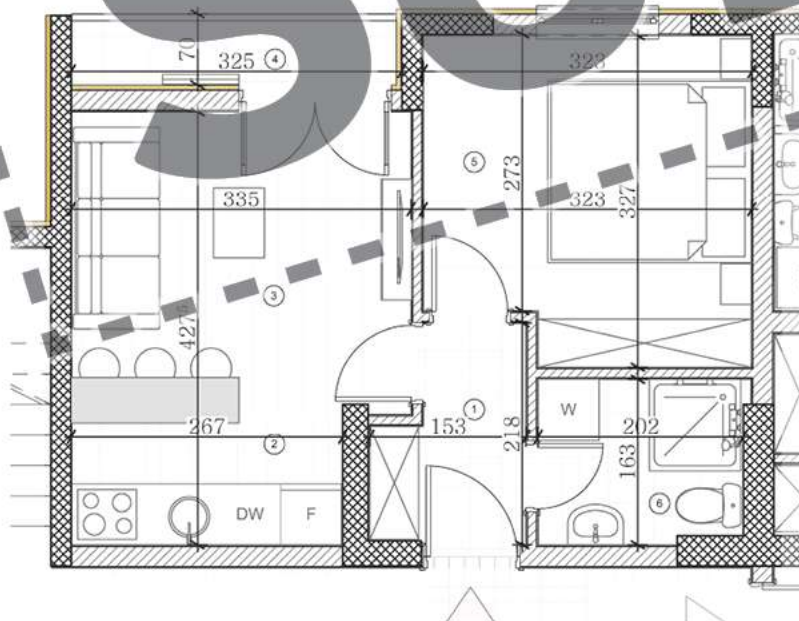
Neto
36,00 m²





- | | |
|-----------------------------|---------------------|
| 1. hodnik | 3,24 m ² |
| 2. kuhinja | 3,60 m ² |
| 3. trpezarija i dnevna soba | 10 m ² |
| 4. terasa | 2,56 m ² |
| 5. spavaća soba | 9,95 m ² |
| 6. kupatilo | 3,41 m ² |

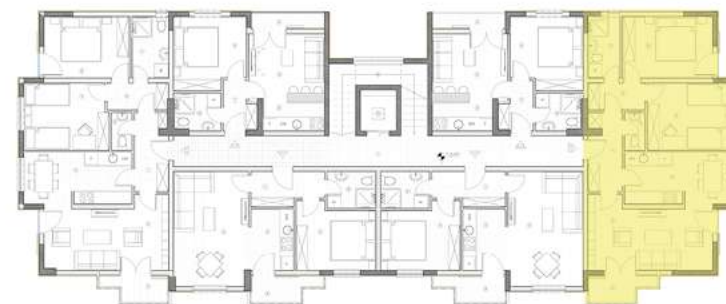
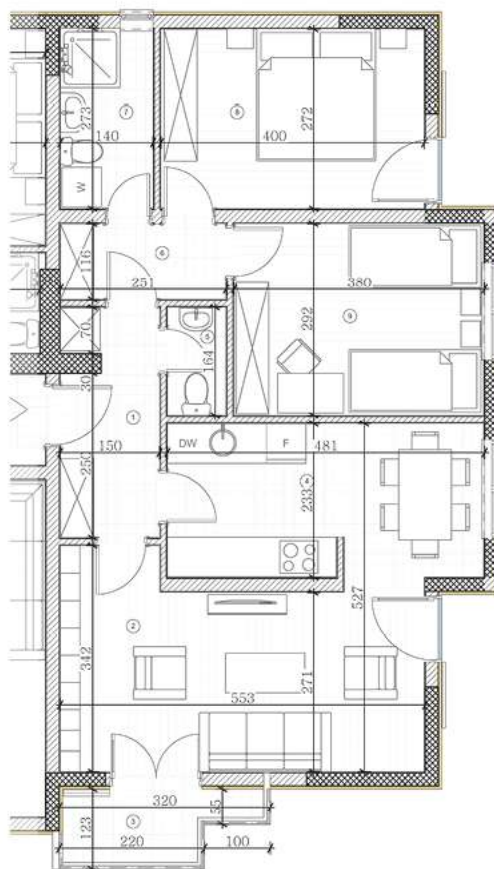
Neto
32,76 m²





- | | |
|-------------------------|----------------------|
| 1. hodnik | 5,54 m ² |
| 2. dnevna soba | 16,60 m ² |
| 3. terasa | 3,15 m ² |
| 4. kuhinja i trpezarija | 11,38 m ² |
| 5. toalet | 1,46 m ² |
| 6. degažman | 3,36 m ² |
| 7. spavaća soba 1 | 10,86 m ² |
| 8. spavaća soba 2 | 11,07 m ² |
| 9. kupatilo | 3,82 m ² |

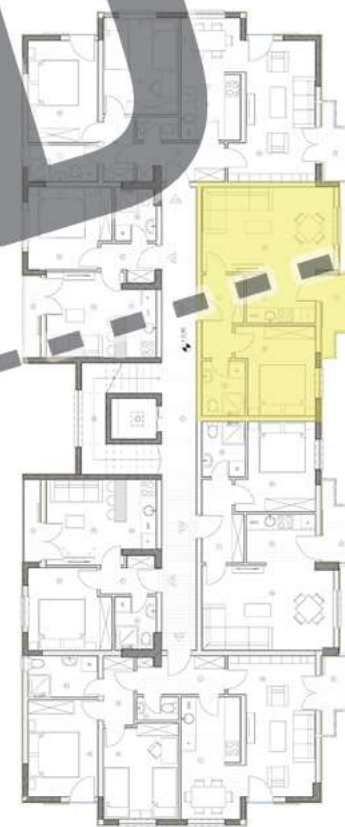
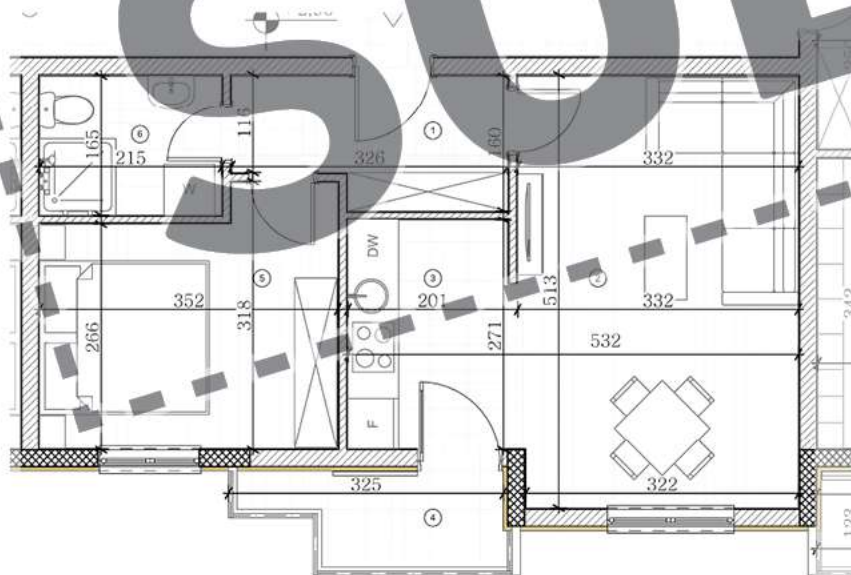
Neto
67,24 m²





- 1. hodnik 4,98 m²
- 2. trpezarija i dnevna soba 16,9 m²
- 3. kuhinja 5,32 m²
- 4. terasa 3,19 m²
- 5. spavaća soba 9,95 m²
- 6. kupatilo 3,55 m²

Neto
43,89 m²



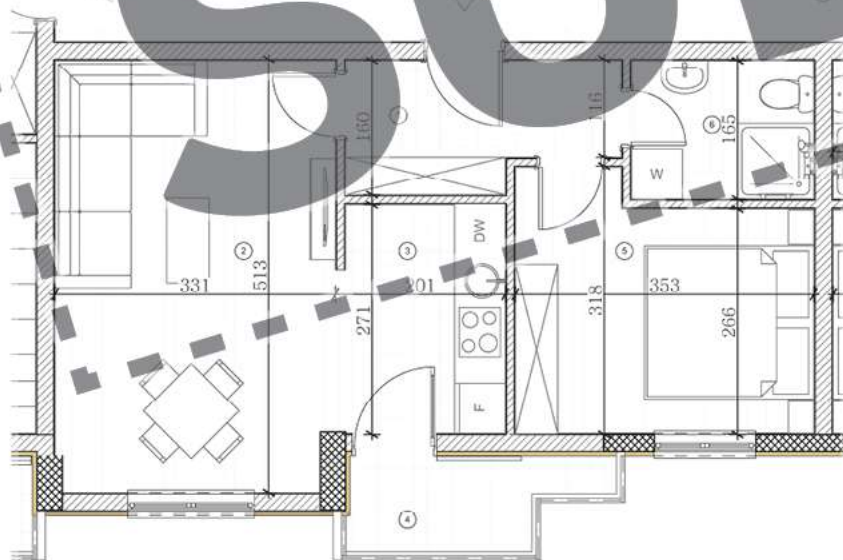
SOLD



- | | |
|-----------------------------|---------------------|
| 1. hodnik | 4,98 m ² |
| 2. trpezarija i dnevna soba | 16,9 m ² |
| 3. kuhinja | 5,32 m ² |
| 4. terasa | 3,19 m ² |
| 5. spavaća soba | 9,95 m ² |
| 6. kupatilo | 3,55 m ² |

Neto

43,89 m²

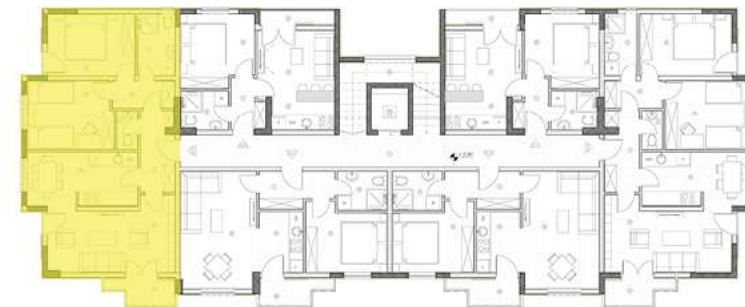
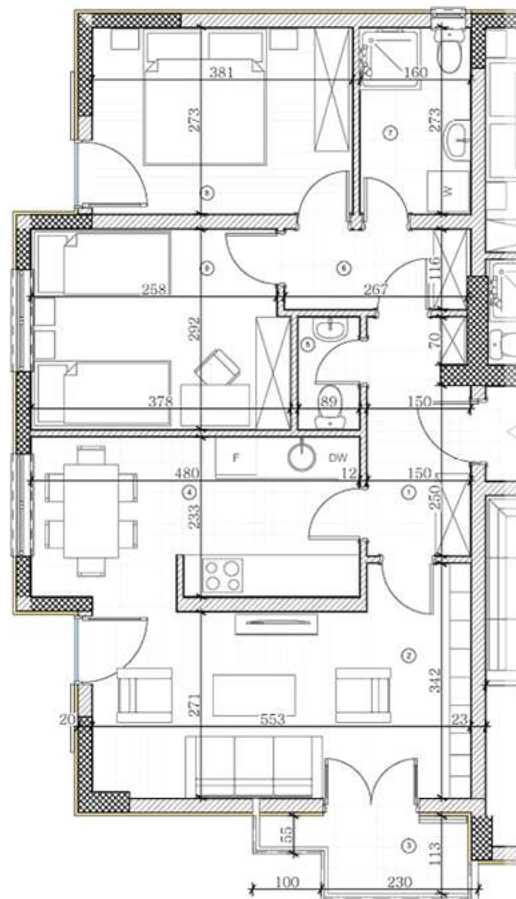


SOLD



- | | |
|-------------------------|----------------------|
| 1. hodnik | 5,56 m ² |
| 2. dnevna soba | 16,01 m ² |
| 3. terasa | 3,15 m ² |
| 4. kuhinja i trpezarija | 11,41 m ² |
| 5. toalet | 1,46 m ² |
| 6. degažman | 3,59 m ² |
| 7. kupatilo | 4,37 m ² |
| 8. spavaća soba 1 | 10,32 m ² |
| 9. spavaća soba 2 | 10,81 m ² |

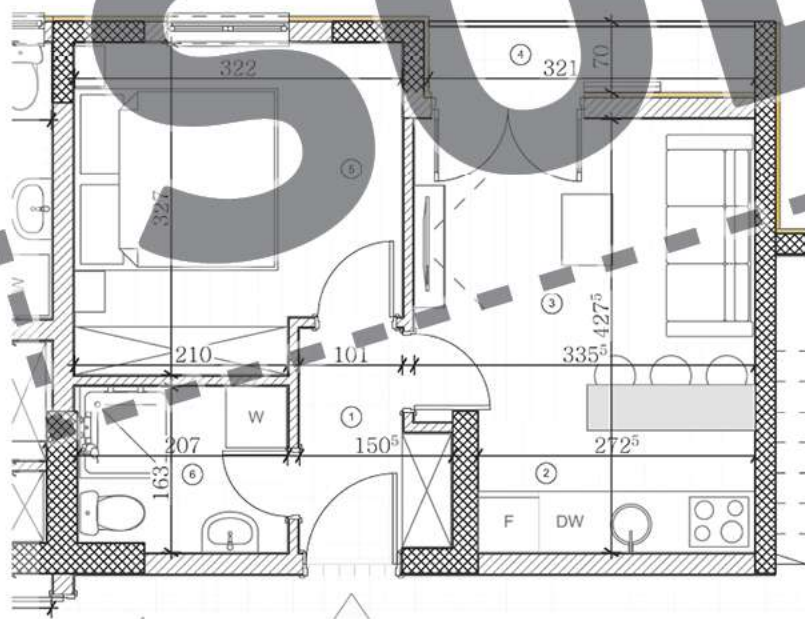
Neto
66,68 m²





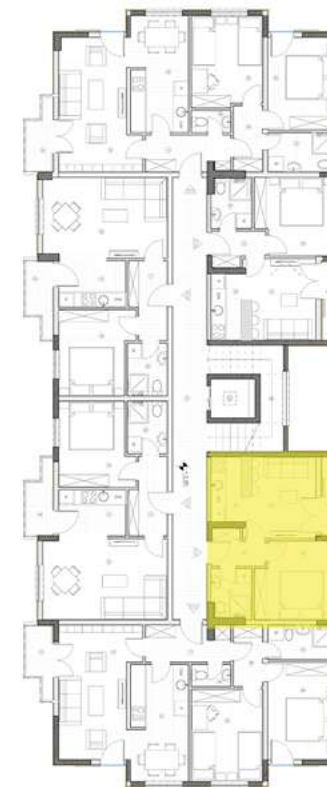
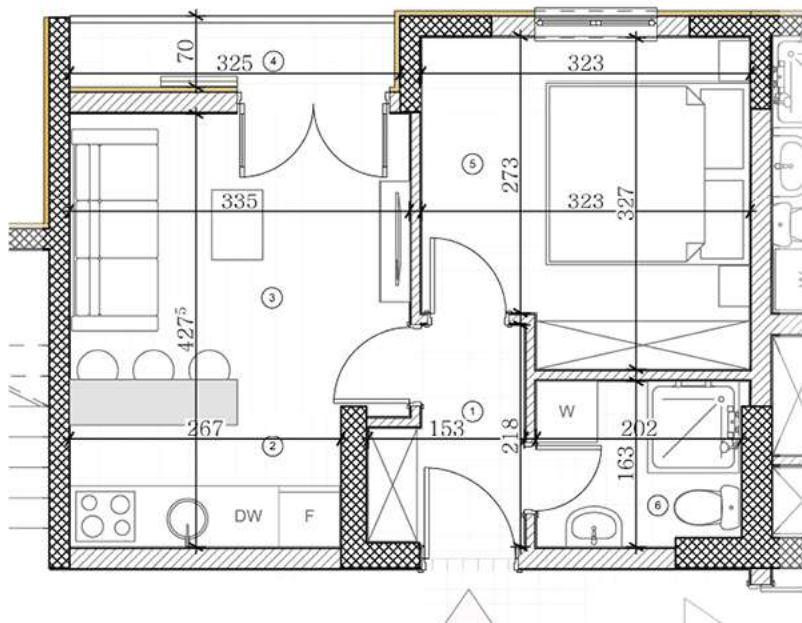
- | | |
|-----------------------------|---------------------|
| 1. hodnik | 3,16 m ² |
| 2. kuhinja | 3,50 m ² |
| 3. trpezarija i dnevna soba | 10 m ² |
| 4. terasa | 2,64 m ² |
| 5. spavaća soba | 9,92 m ² |
| 6. kupatilo | 3,32 m ² |

Neto
32,54 m²





- | | |
|-----------------------------|---------------------|
| 1. hodnik | 3,24 m ² |
| 2. kuhinja | 3,60 m ² |
| 3. trpezarija i dnevna soba | 10 m ² |
| 4. terasa | 2,56 m ² |
| 5. spavaća soba | 9,95 m ² |
| 6. kupatilo | 3,41 m ² |



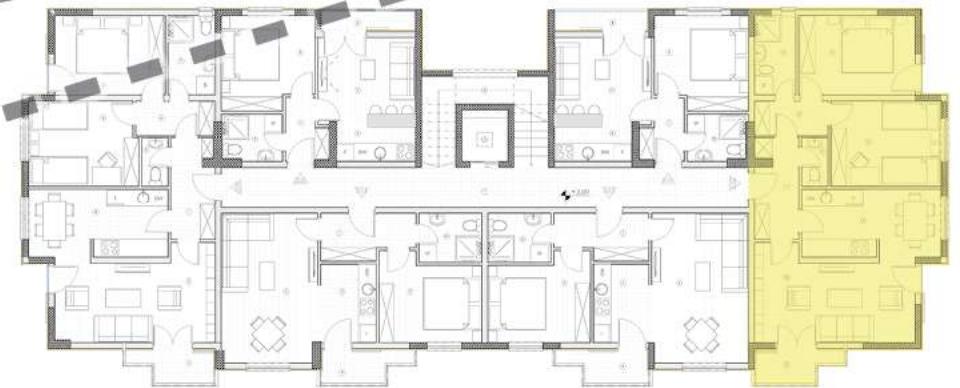
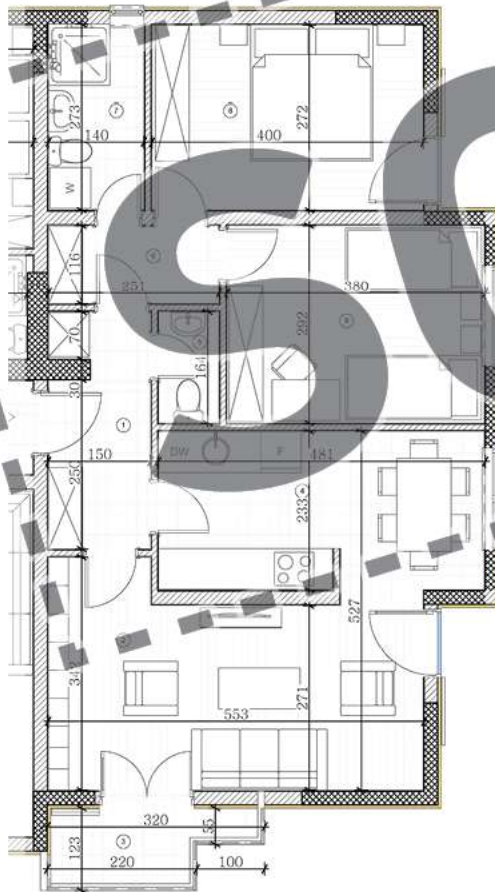
Neto
32,76 m²



- | | |
|-------------------------|----------------------|
| 1. hodnik | 5,54 m ² |
| 2. dnevna soba | 16,6 m ² |
| 3. terasa | 3,15 m ² |
| 4. kuhinja i trpezarija | 11,38 m ² |
| 5. toilet | 1,46 m ² |
| 6. degažman | 3,36 m ² |
| 7. kupatilo | 3,82 m ² |
| 8. spavaća soba 1 | 10,86 m ² |
| 9. spavaća soba 2 | 11,07 m ² |

Neto

67,24 m²





- 1. hodnik 4,98 m²
- 2. trpezarija i dnevna soba 16,9 m²
- 3. kuhinja 5,32 m²
- 4. terasa 3,19 m²
- 5. spavaća soba 9,95 m²
- 6. kupatilo 3,55 m²

Neto
43,89 m²





1. hodnik 4,98 m²
2. trpezarija i dnevna soba 16,9 m²
3. kuhinja 5,32 m²
4. terasa 3,19 m²
5. spavaća soba 9,95 m²
6. kupatilo 3,55 m²

Neto

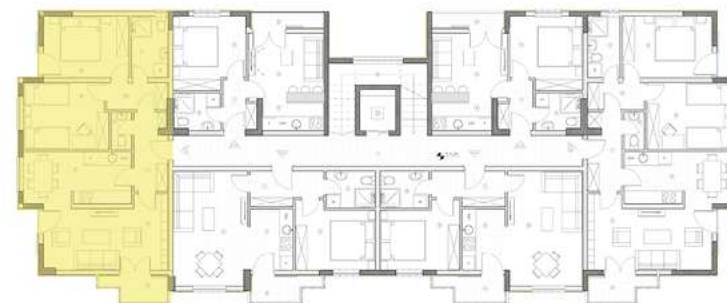
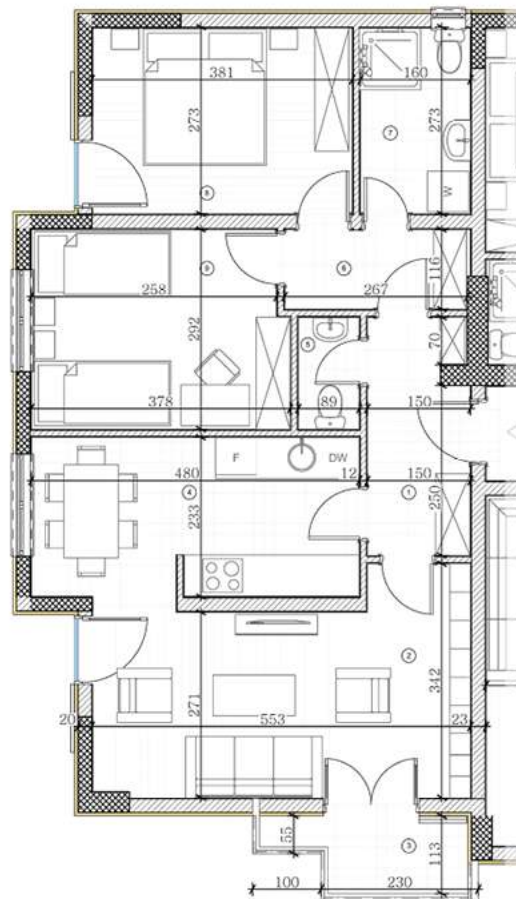
43,89 m²





- | | |
|-------------------------|----------------------|
| 1. hodnik | 5,56 m ² |
| 2. dnevna soba | 16,01 m ² |
| 3. terasa | 3,15 m ² |
| 4. kuhinja i trpezarija | 11,41 m ² |
| 5. toilet | 1,46 m ² |
| 6. degažman | 3,59 m ² |
| 7. kupatilo | 4,37 m ² |
| 8. spavaća soba 1 | 10,32 m ² |
| 9. spavaća soba 2 | 10,81 m ² |

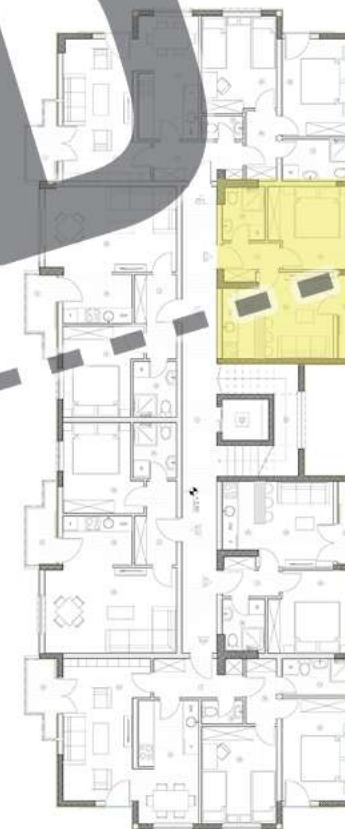
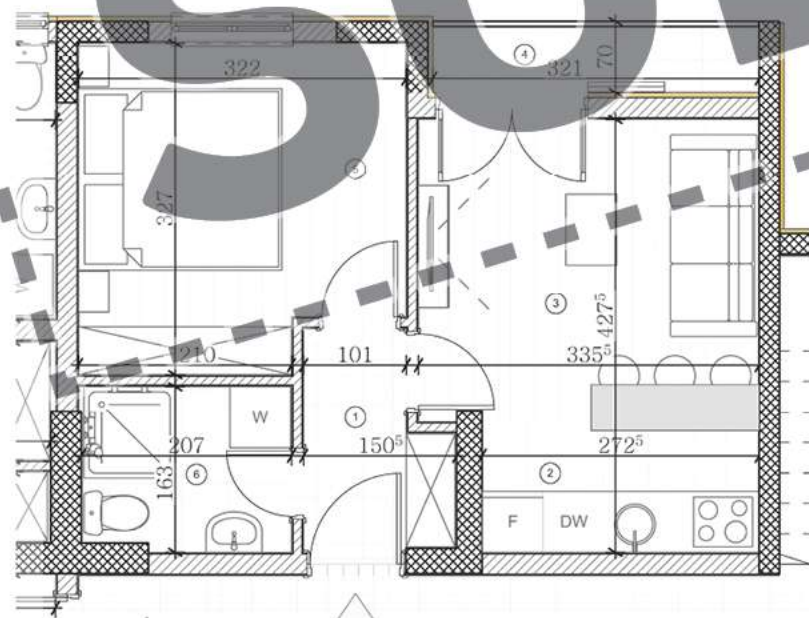
Neto
66,68 m²





- | | |
|-----------------------------|---------------------|
| 1. hodnik | 3,16 m ² |
| 2. kuhinja | 3,50 m ² |
| 3. trpezarija i dnevna soba | 10 m ² |
| 4. terasa | 2,64 m ² |
| 5. spavaća soba | 9,92 m ² |
| 6. kupatilo | 3,32 m ² |

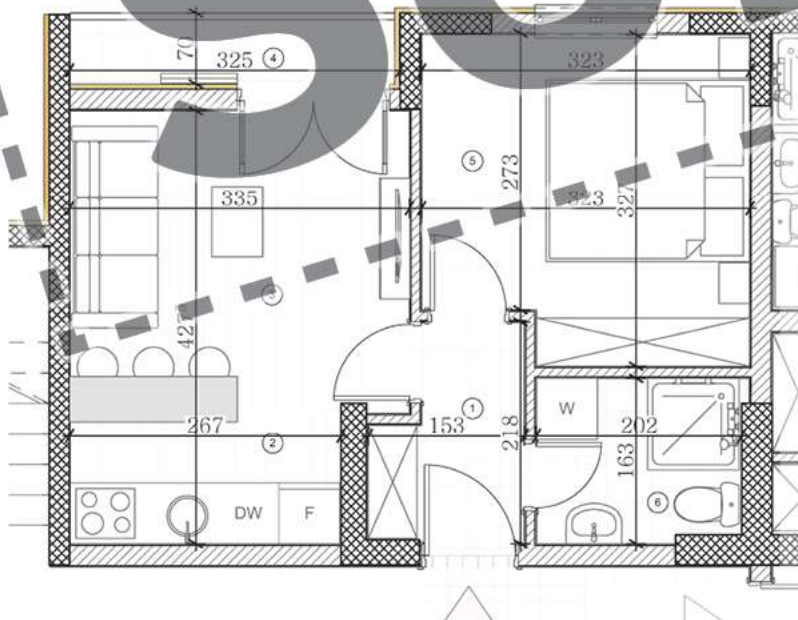
Neto
32,54 m²





- | | |
|-----------------------------|---------------------|
| 1. hodnik | 3,24 m ² |
| 2. kuhinja | 3,60 m ² |
| 3. trpezarija i dnevna soba | 10 m ² |
| 4. terasa | 2,56 m ² |
| 5. spavaća soba | 9,95 m ² |
| 6. kupatilo | 3,41 m ² |

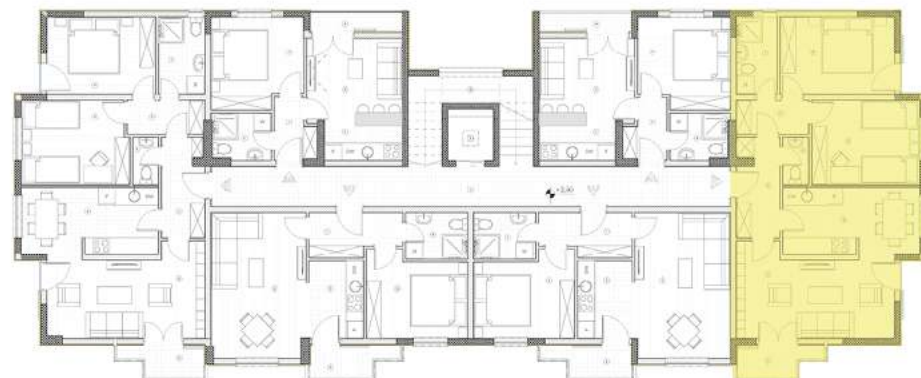
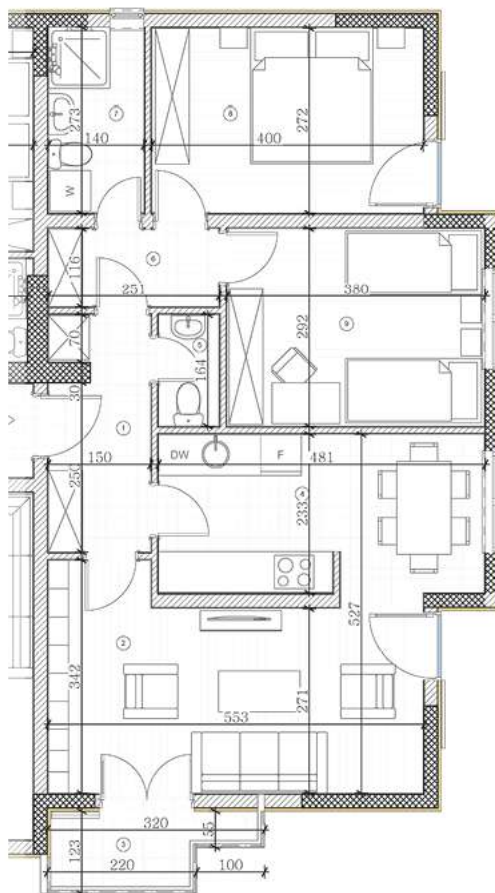
Neto
32,76 m²





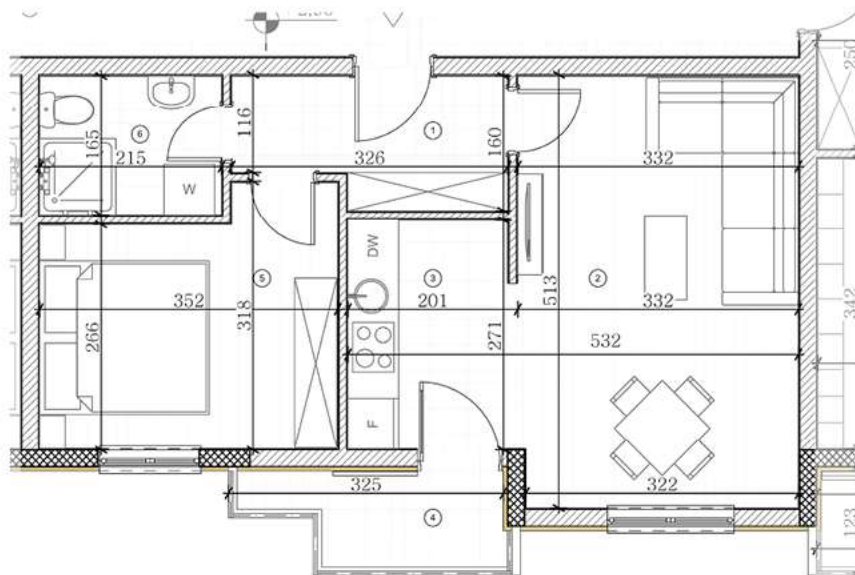
- | | |
|-------------------------|----------------------|
| 1. hodnik | 5,54 m ² |
| 2. dnevna soba | 16,6 m ² |
| 3. terasa | 3,15 m ² |
| 4. kuhinja i trpezarija | 11,38 m ² |
| 5. toilet | 1,46 m ² |
| 6. degažman | 3,36 m ² |
| 7. kupatilo | 3,82 m ² |
| 8. spavaća soba 1 | 10,86 m ² |
| 9. spavaća soba 2 | 11,07 m ² |

Neto
67,24 m²





- 1. hodnik 4,98 m²
- 2. trpezarija i dnevna soba 16,9 m²
- 3. kuhinja 5,32 m²
- 4. terasa 3,19 m²
- 5. spavaća soba 9,95 m²
- 6. kupatilo 3,55 m²



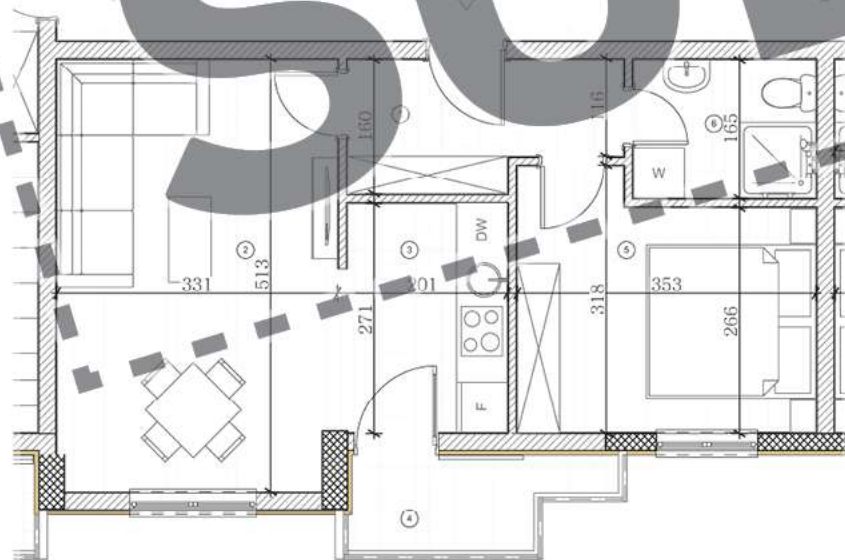
Neto
43,89 m²



- | | |
|-----------------------------|---------------------|
| 1. hodnik | 4,98 m ² |
| 2. trpezarija i dnevna soba | 16,9 m ² |
| 3. kuhinja | 5,32 m ² |
| 4. terasa | 3,19 m ² |
| 5. spavaća soba | 9,95 m ² |
| 6. kupatilo | 3,55 m ² |

Neto

43,89 m²

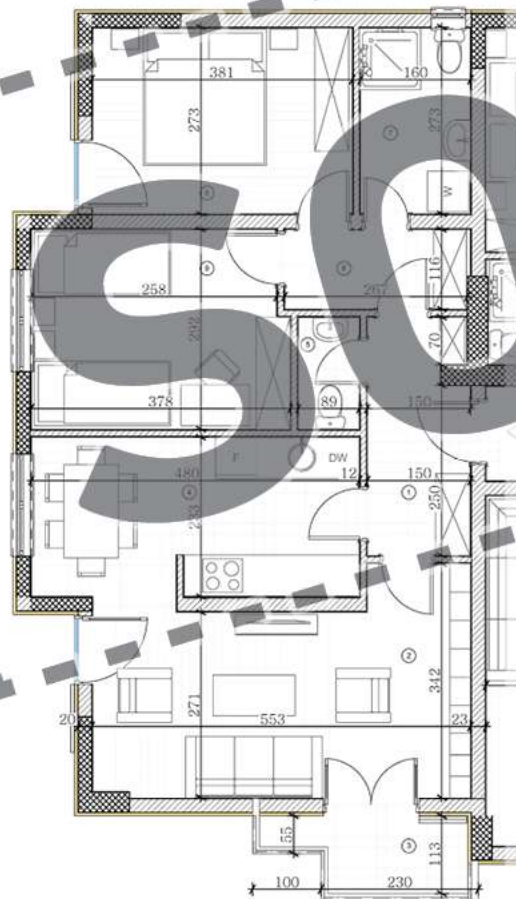


SOLD



- | | |
|-------------------------|----------------------|
| 1. hodnik | 5,56 m ² |
| 2. dnevna soba | 16,01 m ² |
| 3. terasa | 3,15 m ² |
| 4. kuhinja i trpezarija | 11,41 m ² |
| 5. toalet | 1,46 m ² |
| 6. degažman | 3,59 m ² |
| 7. kupatilo | 4,37 m ² |
| 8. spavaća soba 1 | 10,32 m ² |
| 9. spavaća soba 2 | 10,81 m ² |

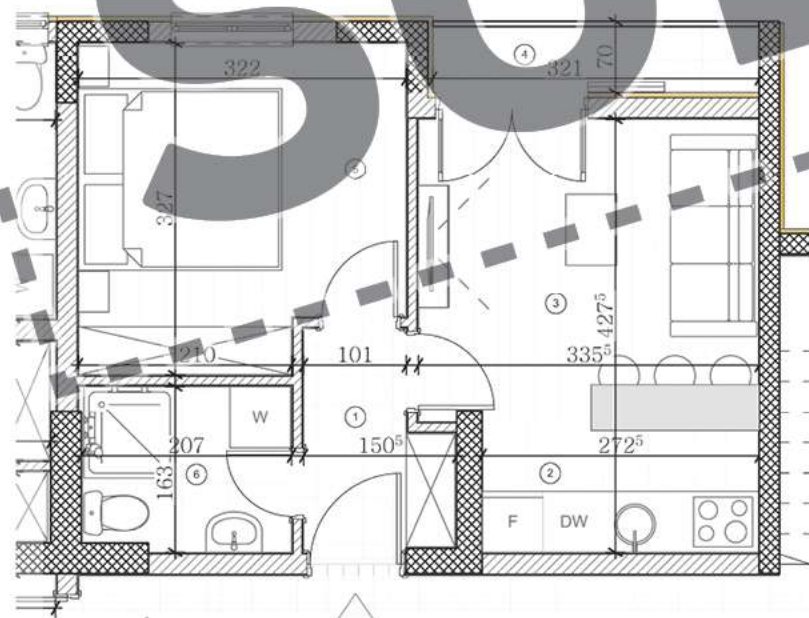
Neto
66,68 m²





- | | |
|-----------------------------|---------------------|
| 1. hodnik | 3,16 m ² |
| 2. kuhinja | 3,50 m ² |
| 3. trpezarija i dnevna soba | 10 m ² |
| 4. terasa | 2,64 m ² |
| 5. spavaća soba | 9,92 m ² |
| 6. kupatilo | 3,32 m ² |

Neto
32,54 m²



SOLD



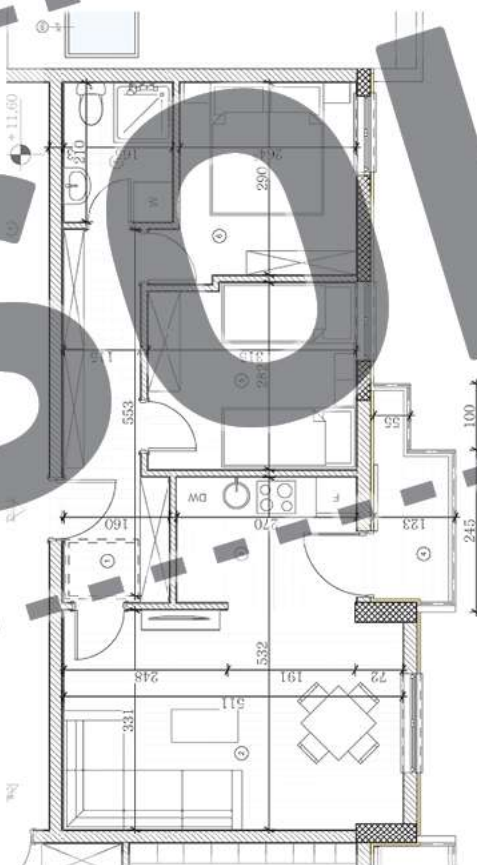
- | | |
|-----------------------------|----------------------|
| 1. hodnik | 7,62 m ² |
| 2. trpezarija i dnevna soba | 16,76 m ² |
| 3. kuhinja | 5,32 m ² |
| 4. terasa | 3,19 m ² |
| 5. spavaća soba | 8,44 m ² |
| 6. spavaća soba | 8,55 m ² |
| 7. kupatilo | 3,55 m ² |

Neto

53,43 m²



SOLD

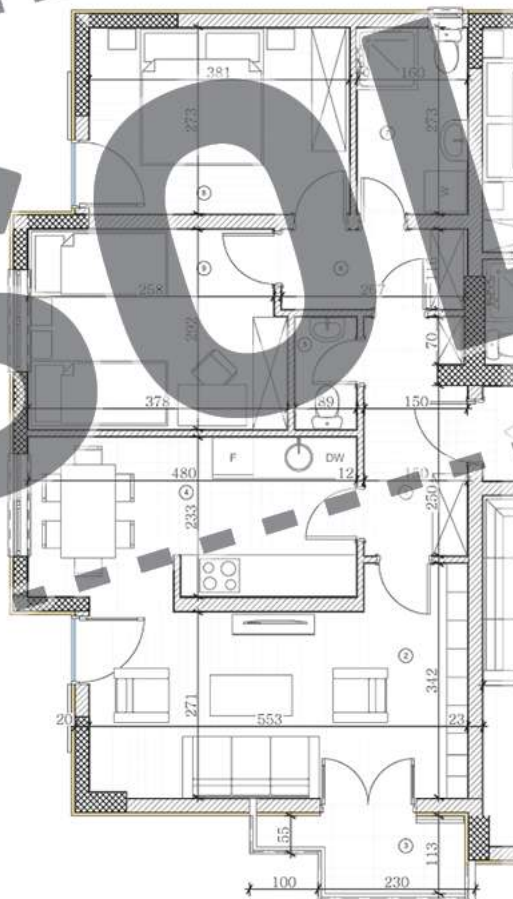




- | | |
|-------------------------|----------------------|
| 1. hodnik | 5,56 m ² |
| 2. dnevna soba | 16,01 m ² |
| 3. terasa | 3,15 m ² |
| 4. kuhinja i trpezarija | 11,41 m ² |
| 5. toilet | 1,46 m ² |
| 6. degažman | 3,59 m ² |
| 7. kupatilo | 4,37 m ² |
| 8. spavaća soba 1 | 10,32 m ² |
| 9. spavaća soba 2 | 10,81 m ² |

Neto

66,68 m²



SOLD

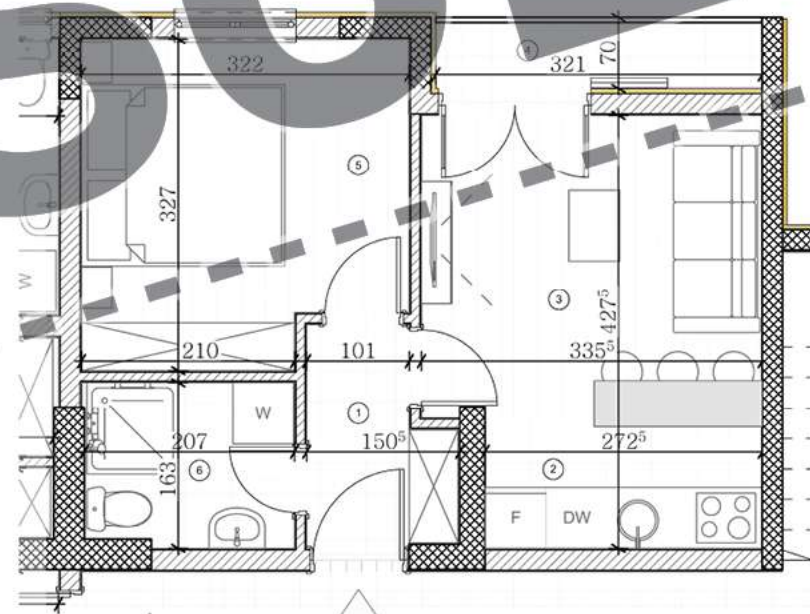


- | | |
|-----------------------------|---------------------|
| 1. hodnik | 3,16 m ² |
| 2. kuhinja | 3,50 m ² |
| 3. trpezarija i dnevna soba | 10 m ² |
| 4. terasa | 2,64 m ² |
| 5. spavaća soba | 9,92 m ² |
| 6. kupatilo | 3,32 m ² |

Neto
32,54 m²



SOLD



“Kvalitet ostaje dugo nakon zaboravljanja cijene”

Henry Royce - britanski inženjer i osnivač Rollse-Royce-a

www.superiorgradnja.com
info@superiorgradnja.com

Tu smo za Vas.
+382 67 20 30 40