



**SUPERIOR**

G R A D N J A

---

## Superior, ukratko.

Superior Gradnja d.o.o., osnovana je 2021. godine, u privatnoj svojini, sa sjedištem u Niksici. Sestrinska je kompanija firme koja više od 12 godina posluje na teritoriji SAD-a. Naša filozofija poslovanja je da kvalitet ne dolazi slučajno nego kao rezultat visokih ciljeva, iskrenog truda, inteligentnih odluka i spretnog izvođenja. Misija je da klijenti budu zadovoljni kvalitetom naših objekata u svakom pogledu, da u njima nadju dom i grade uspomene, zato tezimo vrhunskom kvalitetu te za izvodjace i materijale biramo samo najbolje.

**Kvalitet, dakle, nije čin,  
već navika - Aristotel**



Osnivač kompanije



**SUPERIOR**  
GRADNJA

Superior Residence 1

# Superior Residence 1

Tivat, Crna Gora



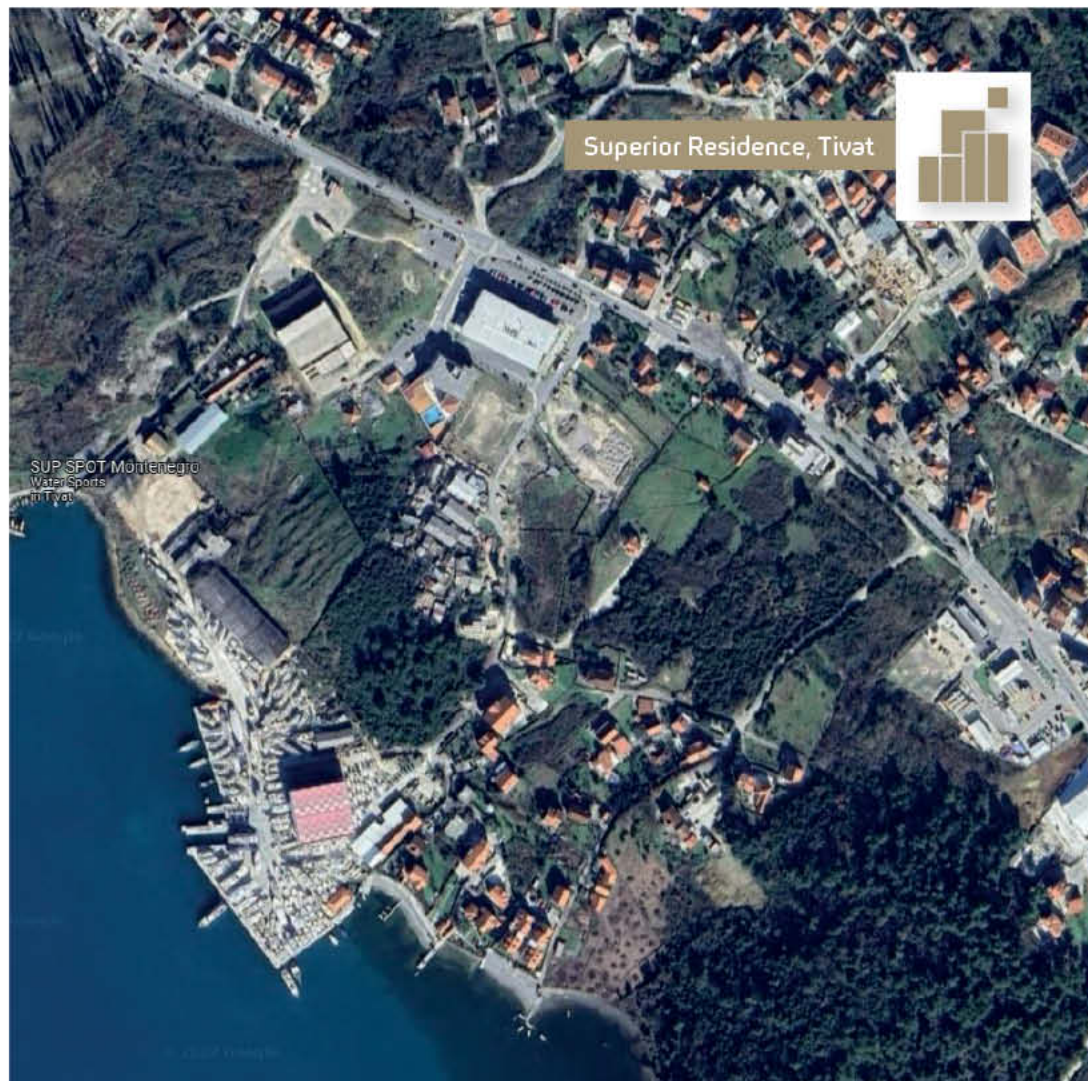
**SUPERIOR**  
GRADNJA

Gradimo viziju.



**Vaša buduća adresa**

42°25'22.9"N 18°42'55.0"E



OVDJE  
se nalazimo

Glavni put  
198m

Jadransko  
more  
641m



1.9km



Aerodrom Tivat



Superior Residence

2.4km



Osnovna škola

Bolnica

2.9km



Porto Montenegro



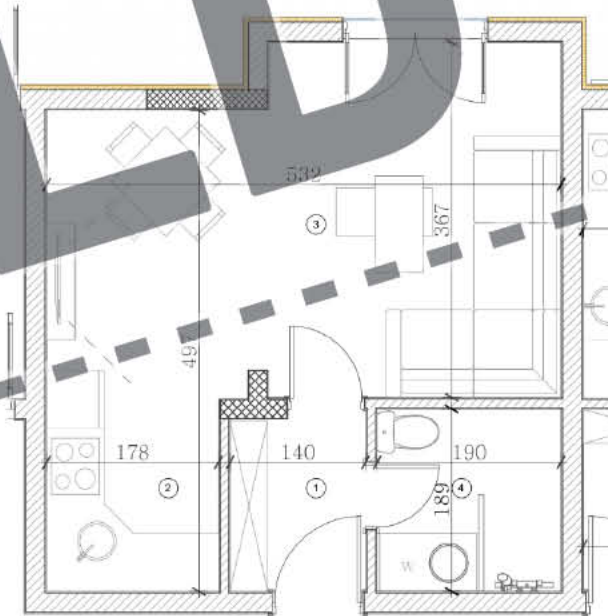
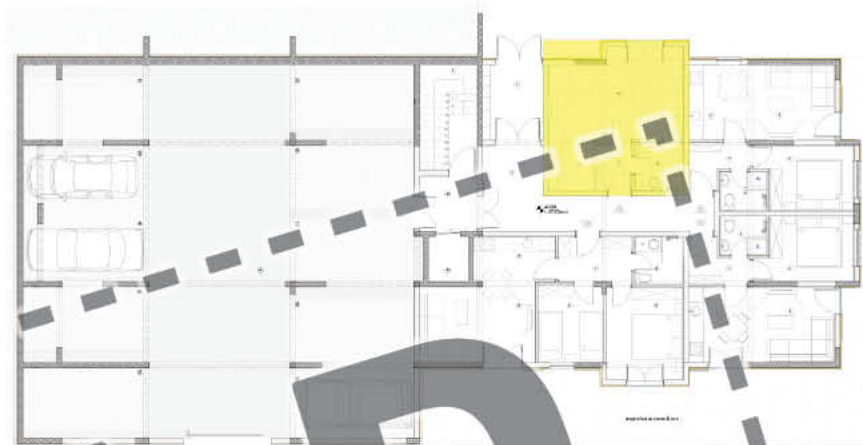
**SUPERIOR**

GRADNJA



- 1 Hodnik 2,77m<sup>2</sup>
- 2 Kuhinja 4,15m<sup>2</sup>
- 3 Trpezarija i dnevna soba 17,52m<sup>2</sup>
- 4 Kupatilo 3,39m<sup>2</sup>

Neto  
**27,83m<sup>2</sup>**

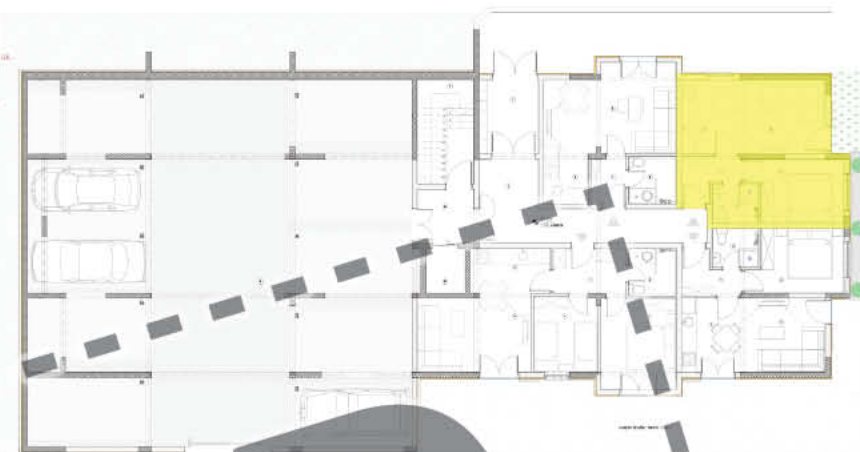




- 1 Hodnik 4,06m<sup>2</sup>
- 2 Kuhinja 3,23m<sup>2</sup>
- 3 Trpezarija i dnevna soba 14,06m<sup>2</sup>
- 4 Spavaća soba 8,92m<sup>2</sup>
- 5 Kupatilo 2,83m<sup>2</sup>

Zelena terasa  
5,11m<sup>2</sup>

Neto  
**38,21m<sup>2</sup>**



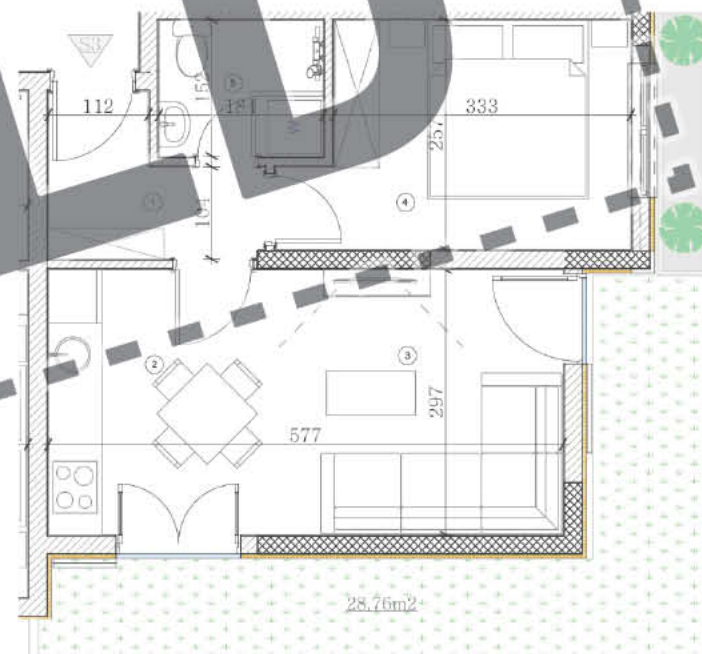
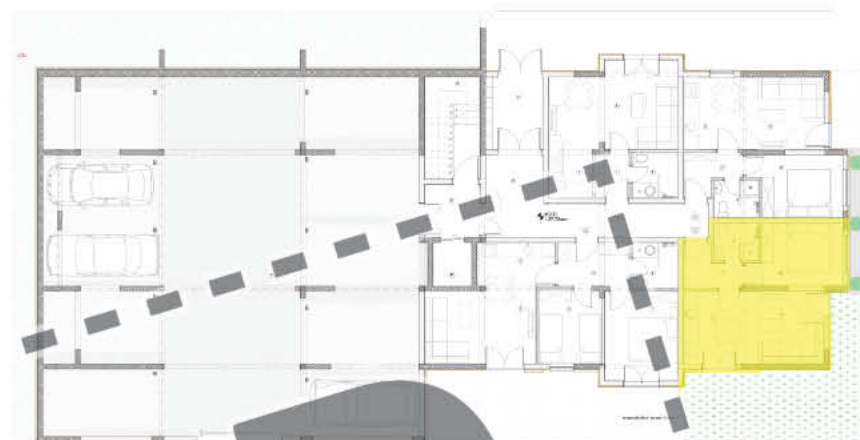




- 1 Hodnik 4,07m<sup>2</sup>
- 2 Kuhinja 7,11m<sup>2</sup>
- 3 Trpezarija i dnevna soba 10,32m<sup>2</sup>
- 4 Spavaća soba 9,28m<sup>2</sup>
- 5 Kupatilo 2,81m<sup>2</sup>

Zelena terasa  
28,76m<sup>2</sup>

**Neto**  
**62,35m<sup>2</sup>**

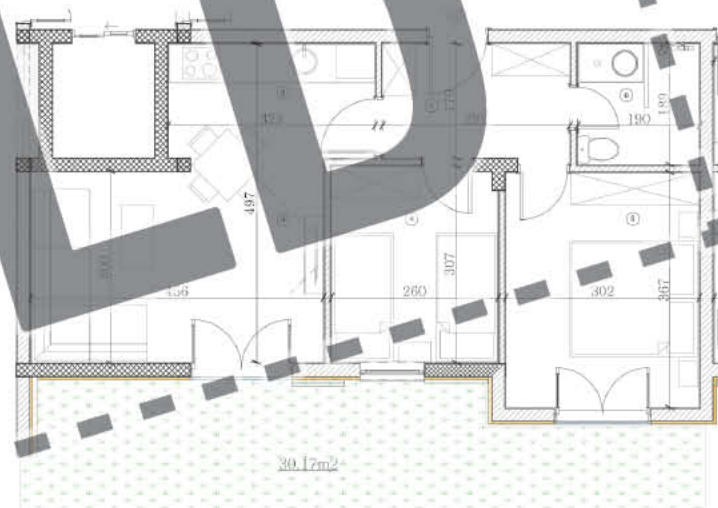
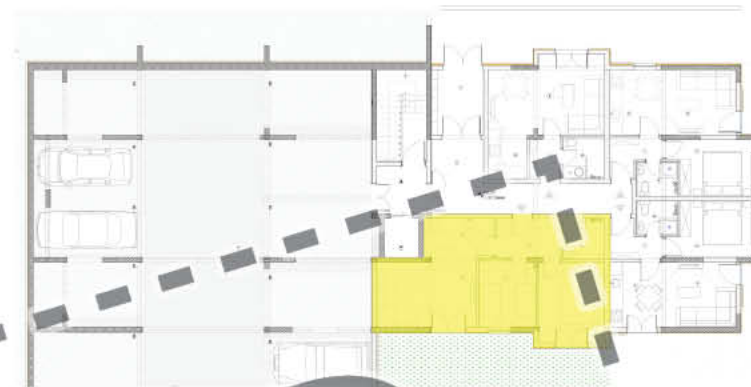




- 1 Hodnik 5,69m<sup>2</sup>
- 2 Kuhinja 3,03m<sup>2</sup>
- 3 Trpezarija i dnevna soba 16,83m<sup>2</sup>
- 4 Spavaća soba 1 7,90m<sup>2</sup>
- 5 Spavaća soba 2 11,49m<sup>2</sup>
- 6 Kupatilo 3,39m<sup>2</sup>

Zelena terasa  
30,17m<sup>2</sup>

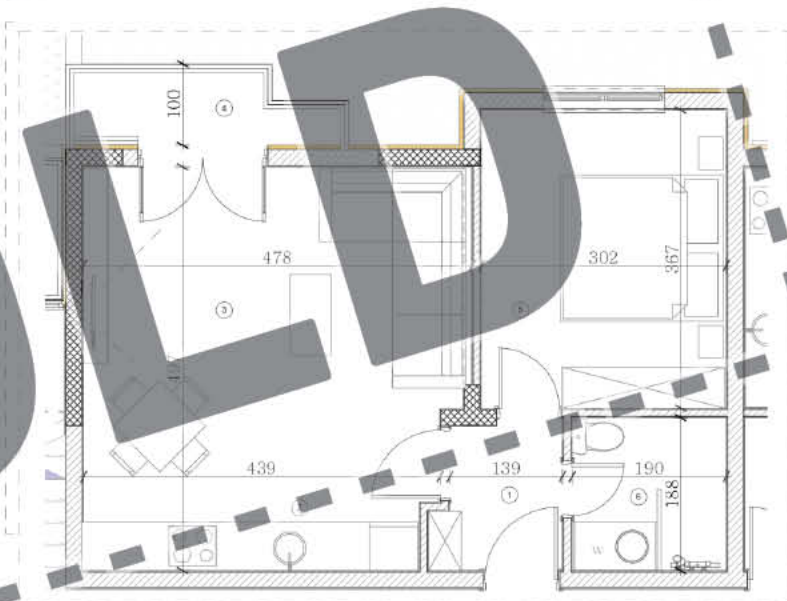
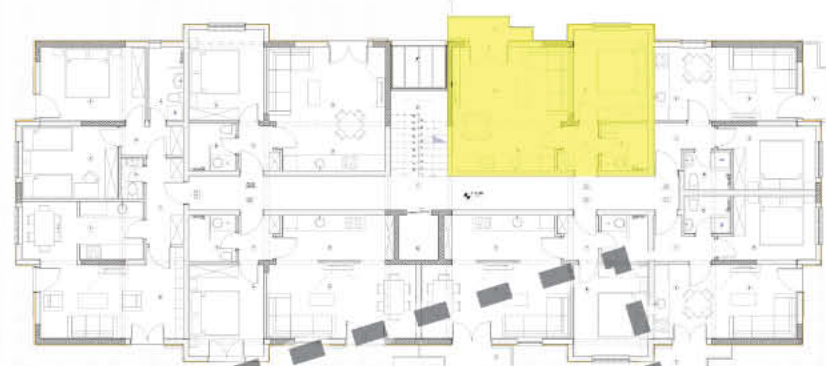
Neto  
**78,50m<sup>2</sup>**





- 1 Hodnik 3,07m<sup>2</sup>
- 2 Kuhinja 3,92m<sup>2</sup>
- 3 Trpezarija i dnevna soba 19,09m<sup>2</sup>
- 4 Terasa 2,72m<sup>2</sup>
- 5 Spavaća soba 11,40m<sup>2</sup>
- 6 Kupatilo 3,39m<sup>2</sup>

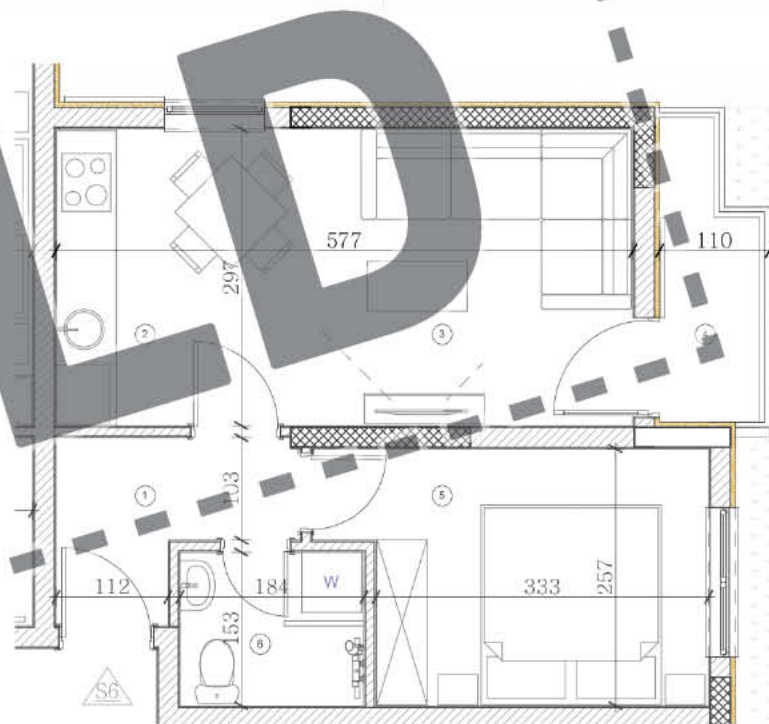
**Neto**  
**43,59m<sup>2</sup>**





- 1 Hodnik 4,05m<sup>2</sup>
- 2 Kuhinja 3,23m<sup>2</sup>
- 3 Trpezarija i dnevna soba 14,06m<sup>2</sup>
- 4 Terasa 2,72m<sup>2</sup>
- 5 Spavaća soba 8,92m<sup>2</sup>
- 6 Kupatilo 2,83m<sup>2</sup>

Neto  
**35,81m<sup>2</sup>**





1 Hodnik	4,07m <sup>2</sup>
2 Kuhinja	7,11m <sup>2</sup>
3 Trpezarija i dnevna soba	2,73m <sup>2</sup>
4 Terasa	10,17m <sup>2</sup>
5 Spavaća soba	8,92m <sup>2</sup>
6 Kupatilo	2,81m <sup>2</sup>

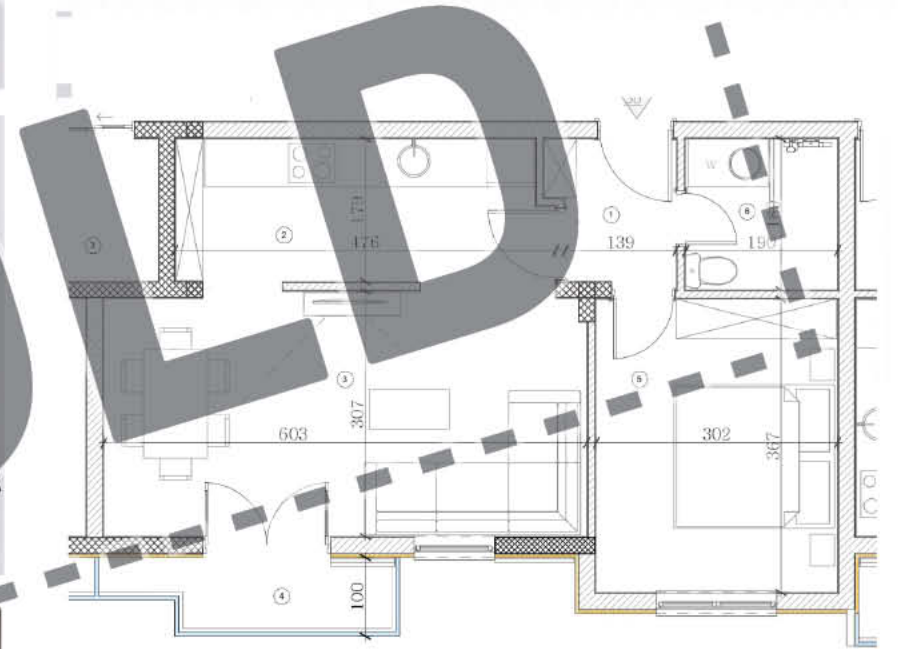
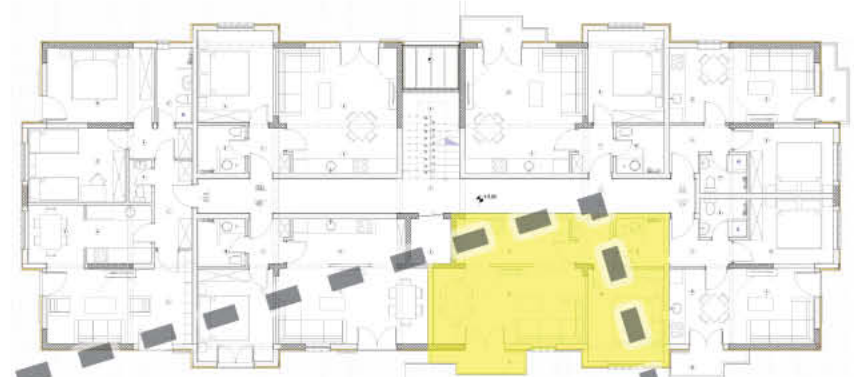
Neto  
**35,81m<sup>2</sup>**





- 1 Hodnik 2,99m<sup>2</sup>
- 2 Kuhinja 8,22m<sup>2</sup>
- 3 Trpezarija i dnevna soba 18,87m<sup>2</sup>
- 4 Terasa 3,01m<sup>2</sup>
- 5 Spavaća soba 11,39m<sup>2</sup>
- 6 Kupatilo 3,48m<sup>2</sup>

**Neto**  
**47,96m<sup>2</sup>**

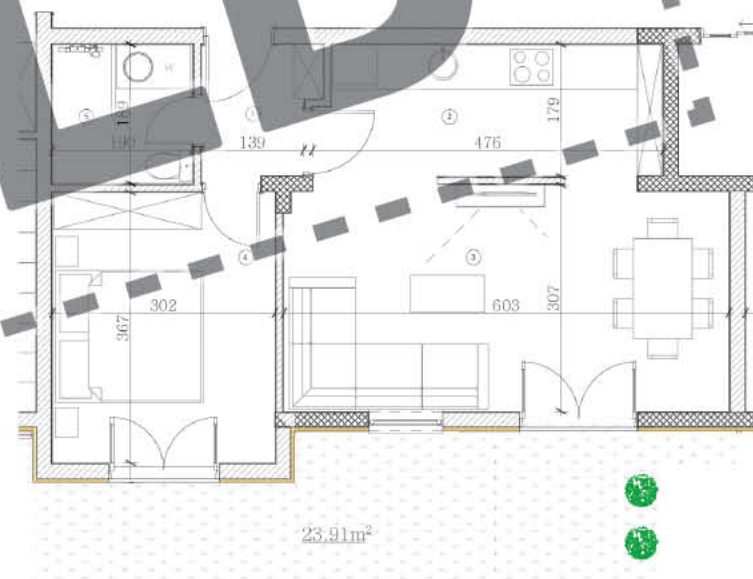
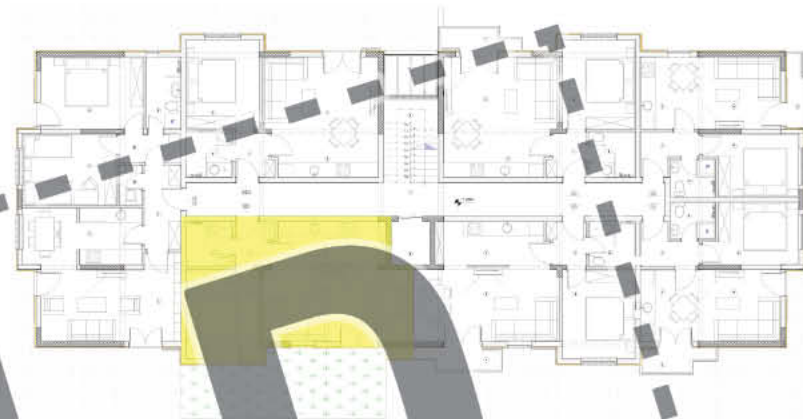




- 1 Hodnik 2,97m<sup>2</sup>
- 2 Kuhinja 8,21m<sup>2</sup>
- 3 Trpezarija i dnevna soba 18,69m<sup>2</sup>
- 4 Spavaća soba 11,49m<sup>2</sup>
- 5 Kupatilo 3,48m<sup>2</sup>

Zelena terasa  
23,91m<sup>2</sup>

**Neto**  
**68,75m<sup>2</sup>**

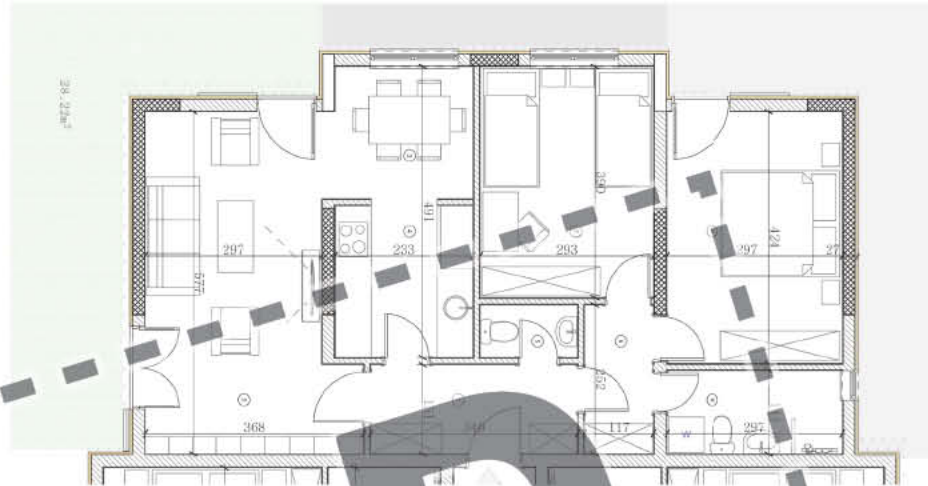
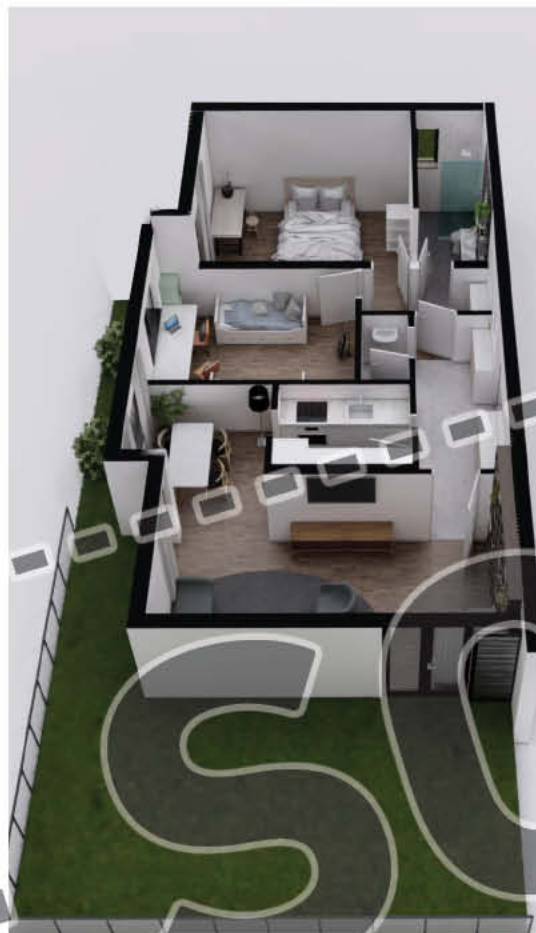




- 1 Hodnik 5,73m<sup>2</sup>
- 2 Dnevna soba 18,50m<sup>2</sup>
- 3 Trpezarija 5,49m<sup>2</sup>
- 4 Kuhinja 6,17m<sup>2</sup>
- 5 Toalet 1,46m<sup>2</sup>
- 6 Deganžman 3,36m<sup>2</sup>
- 7 Spavaća soba 1 11,39m<sup>2</sup>
- 8 Spavaća soba 2 12,75m<sup>2</sup>
- 9 Kupatilo 4,16m<sup>2</sup>

Zelena terasa  
28,22m<sup>2</sup>

**Neto**  
**97,23m<sup>2</sup>**

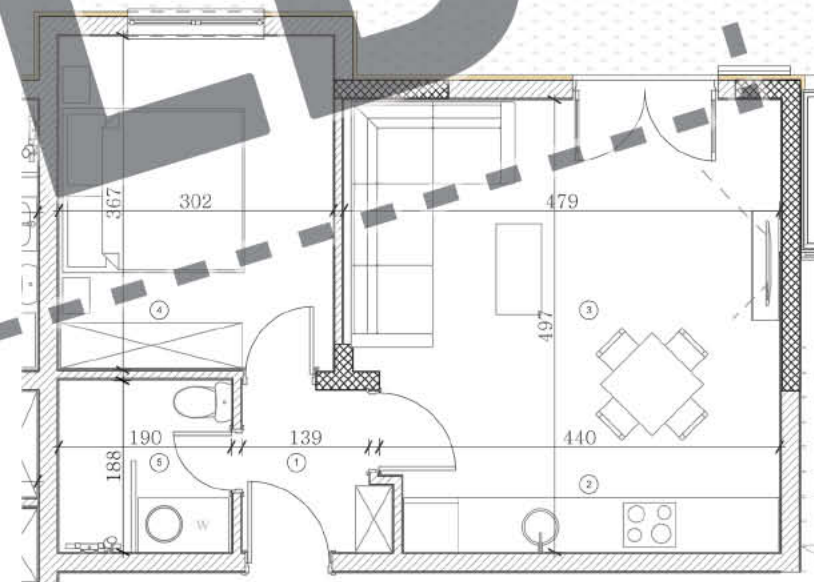
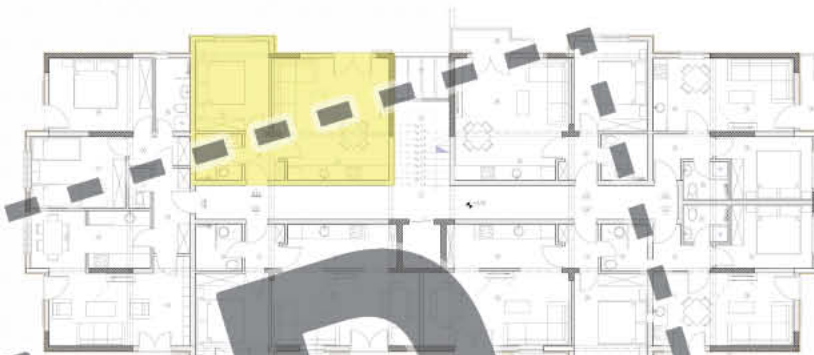
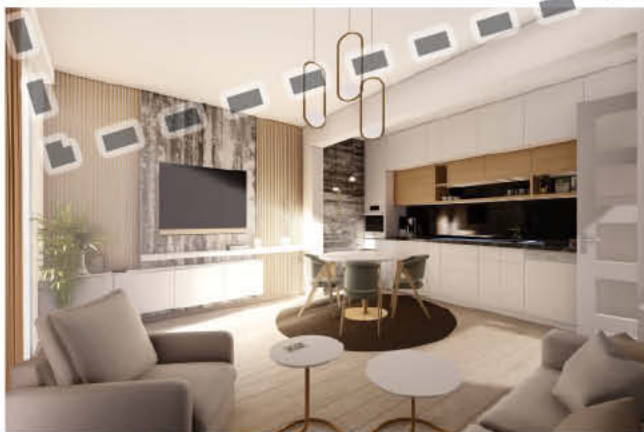






- 1 Hodnik 3,09m<sup>2</sup>
- 2 Kuhinja 3,92m<sup>2</sup>
- 3 Trpezarija i dnevna soba 19,00m<sup>2</sup>
- 4 Spavaća soba 11,40m<sup>2</sup>
- 5 Kupatilo 3,39m<sup>2</sup>

Neto  
**40,80m<sup>2</sup>**

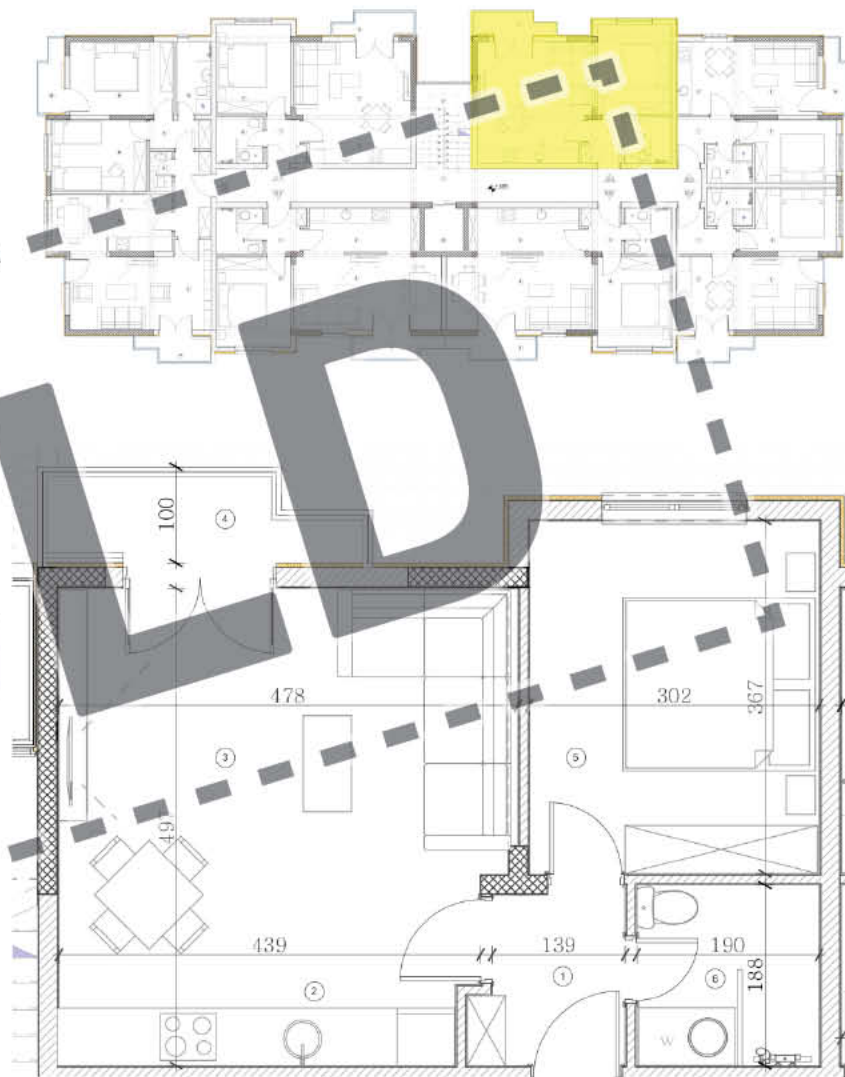


**SAJID**



- 1 Hodnik 3,07m<sup>2</sup>
- 2 Kuhinja 3,92m<sup>2</sup>
- 3 Trpezarija i dnevna soba 19,09m<sup>2</sup>
- 4 Terasa 2,72m<sup>2</sup>
- 5 Spavaća soba 11,40m<sup>2</sup>
- 6 Kupatilo 3,39m<sup>2</sup>

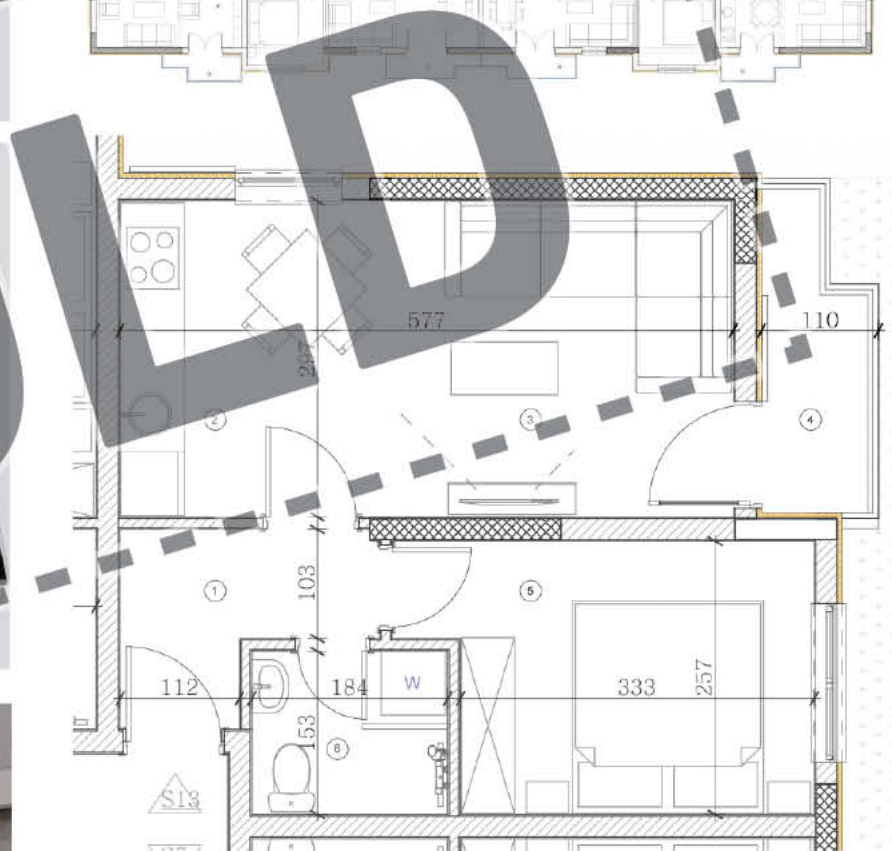
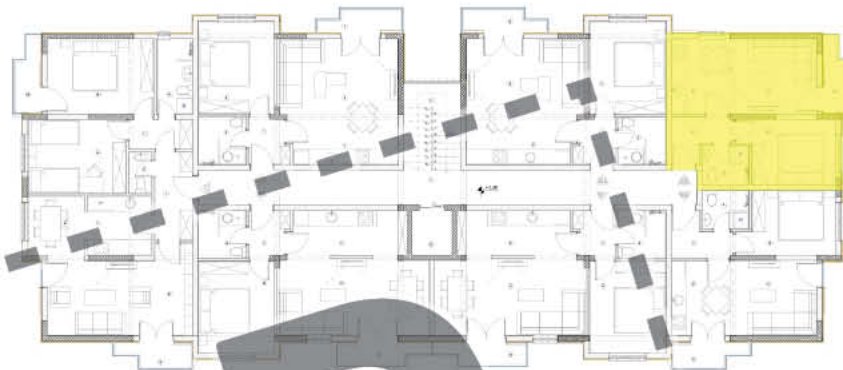
**Neto**  
**43,59m<sup>2</sup>**





1 Hodnik	4,05m <sup>2</sup>
2 Kuhinja	3,23m <sup>2</sup>
3 Trpezarija i dnevna soba	14,06m <sup>2</sup>
4 Terasa	2,72m <sup>2</sup>
5 Spavaća soba	8,92m <sup>2</sup>
6 Kupatilo	2,83m <sup>2</sup>

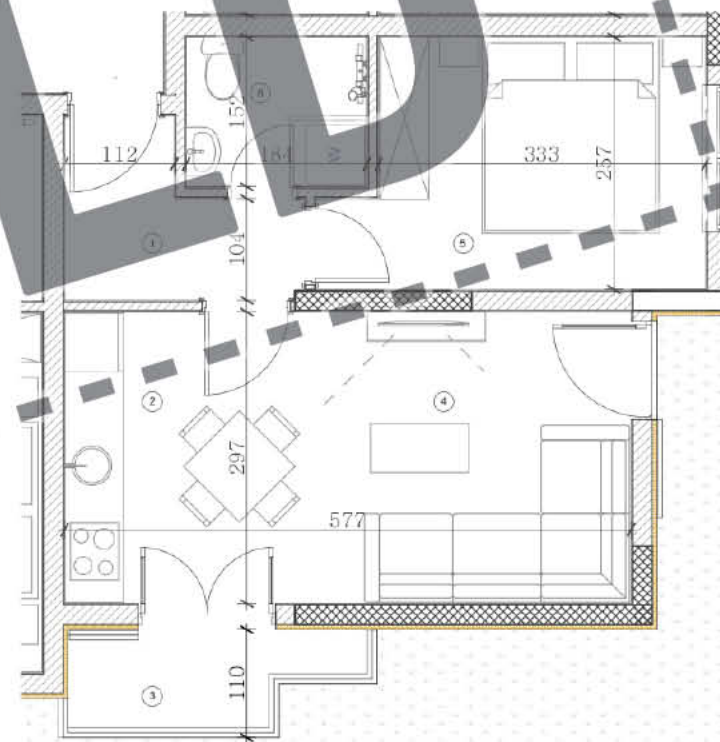
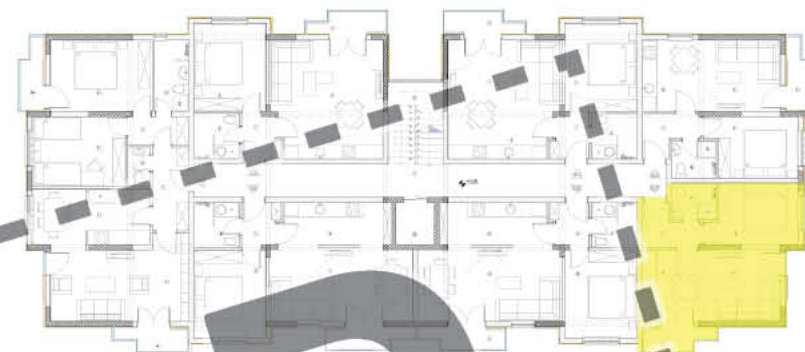
**Neto**  
**35,81m<sup>2</sup>**





1 Hodnik	4,07m <sup>2</sup>
2 Kuhinja i trpezarija	7,11m <sup>2</sup>
3 Terasa	2,73m <sup>2</sup>
4 Dnevna soba	10,17m <sup>2</sup>
5 Spavaća soba	8,92m <sup>2</sup>
6 Kupatilo	2,81m <sup>2</sup>

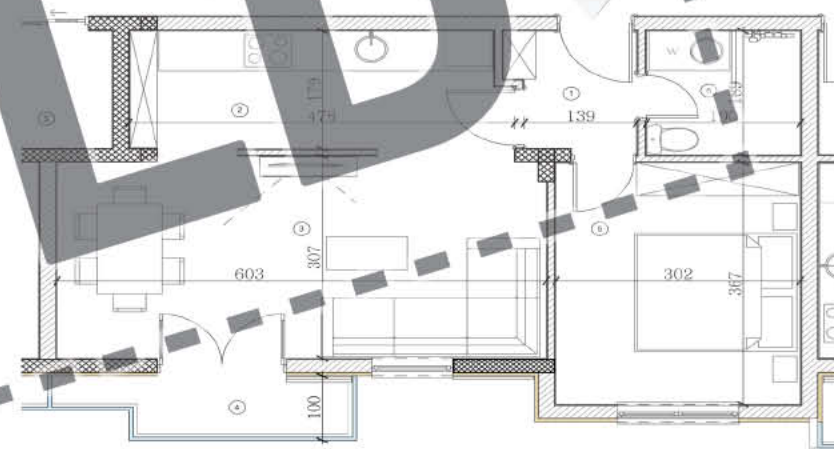
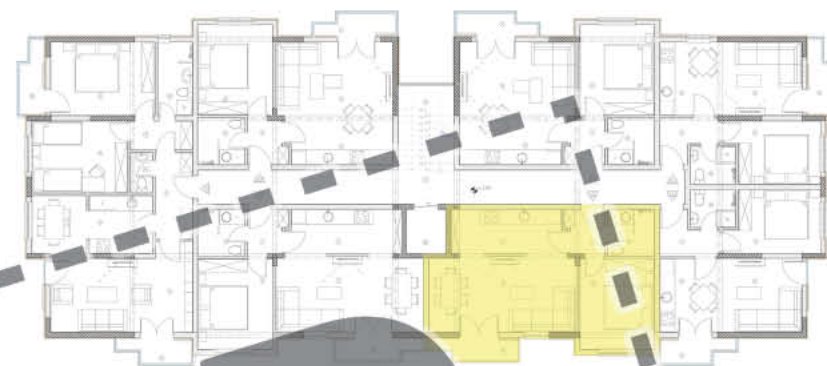
**Neto**  
**35,81m<sup>2</sup>**





1 Hodnik	2,99m <sup>2</sup>
2 Kuhinja	8,22m <sup>2</sup>
3 Trpezarija i dnevna soba	18,87m <sup>2</sup>
4 Terasa	3,01m <sup>2</sup>
5 Spavaća soba	11,39m <sup>2</sup>
6 Kupatilo	3,48m <sup>2</sup>

**Neto**  
**47,96m<sup>2</sup>**





- 1 Hodnik 2,97m<sup>2</sup>
- 2 Kuhinja 8,21m<sup>2</sup>
- 3 Trpezarija i dnevna soba 18,84m<sup>2</sup>
- 4 Terasa 3,03m<sup>2</sup>
- 5 Spavaća soba 11,49m<sup>2</sup>
- 6 Kupatilo 3,47m<sup>2</sup>

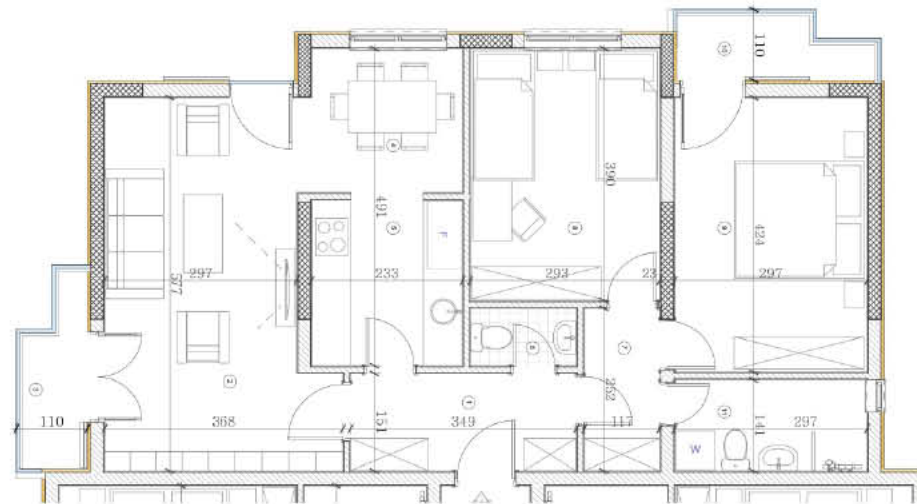
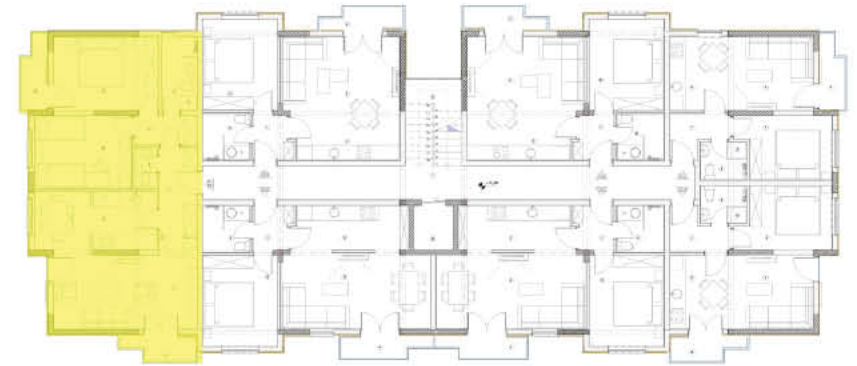
**Neto**  
**48,01m<sup>2</sup>**





- 1 Hodnik 5,73m<sup>2</sup>
- 2 Dnevna soba 18,50m<sup>2</sup>
- 3 Terasa 2,73m<sup>2</sup>
- 4 Trpezarija 5,49m<sup>2</sup>
- 5 Kuhinja 6,17m<sup>2</sup>
- 6 Toalet 1,46m<sup>2</sup>
- 7 Degažman 3,36m<sup>2</sup>
- 8 Spavaća soba 1 11,39m<sup>2</sup>
- 9 Spavaća soba 2 12,75m<sup>2</sup>
- 10 Terasa 2,71m<sup>2</sup>
- 11 Kupatilo 4,16m<sup>2</sup>

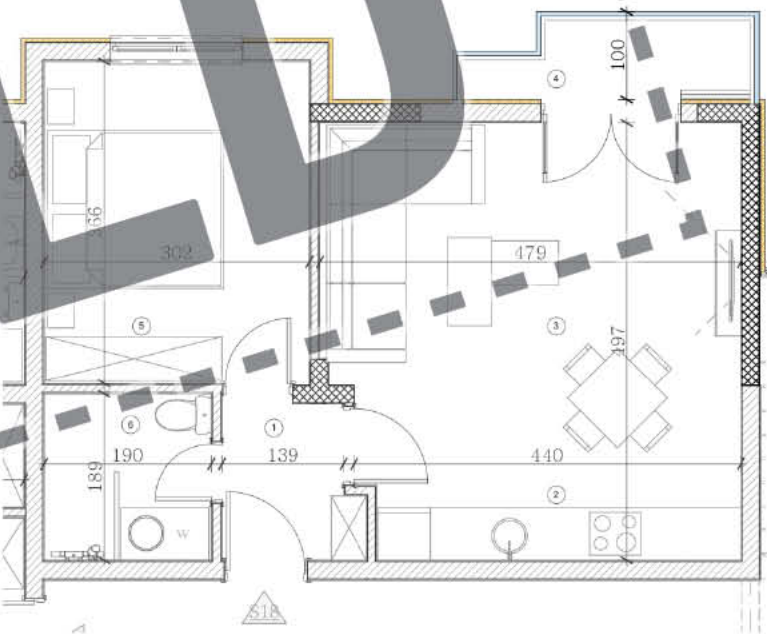
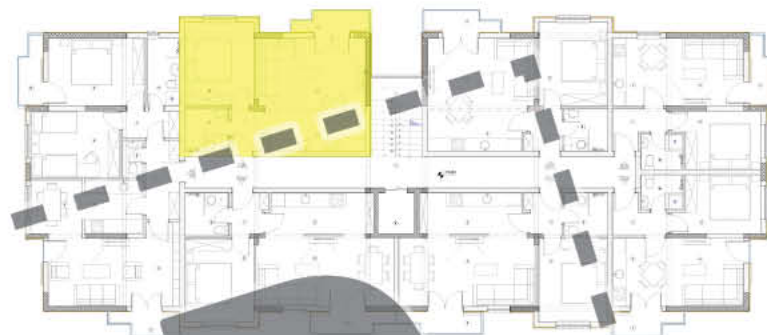
**Neto**  
**74,45m<sup>2</sup>**





- |                               |                     |
|-------------------------------|---------------------|
| 1 Hodnik                      | 3,09m <sup>2</sup>  |
| 2 Kuhinja                     | 3,92m <sup>2</sup>  |
| 3 Trpezarija i<br>dnevna soba | 19,00m <sup>2</sup> |
| 4 Terasa                      | 2,74m <sup>2</sup>  |
| 5 Spavaća soba                | 11,40m <sup>2</sup> |
| 6 Kupatilo                    | 3,39m <sup>2</sup>  |

**Neto**  
**43,54m<sup>2</sup>**

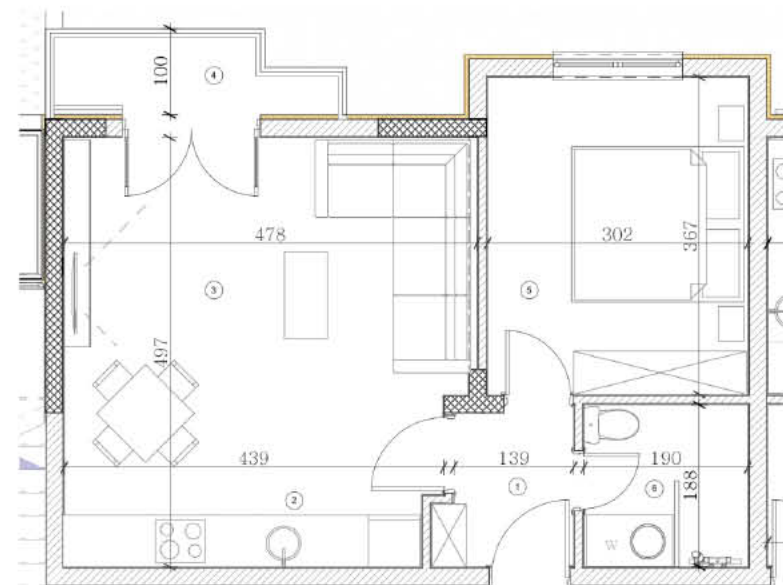






- |                            |                     |
|----------------------------|---------------------|
| 1 Hodnik                   | 3,07m <sup>2</sup>  |
| 2 Kuhinja                  | 3,92m <sup>2</sup>  |
| 3 Trpezarija i dnevna soba | 19,09m <sup>2</sup> |
| 4 Terasa                   | 2,72m <sup>2</sup>  |
| 5 Spavaća soba             | 11,40m <sup>2</sup> |
| 6 Kupatilo                 | 3,39m <sup>2</sup>  |

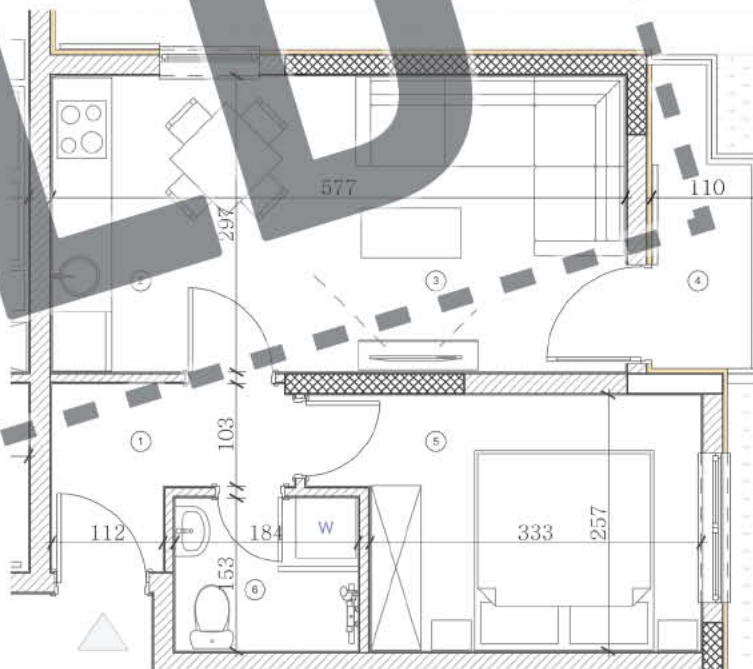
**Neto**  
**43,59m<sup>2</sup>**





- |                               |                     |
|-------------------------------|---------------------|
| 1 Hodnik                      | 4,05m <sup>2</sup>  |
| 2 Kuhinja                     | 3,23m <sup>2</sup>  |
| 3 Trpezarija i<br>dnevna soba | 14,06m <sup>2</sup> |
| 4 Terasa                      | 2,72m <sup>2</sup>  |
| 5 Spavaća soba                | 8,92m <sup>2</sup>  |
| 6 Kupatilo                    | 2,83m <sup>2</sup>  |

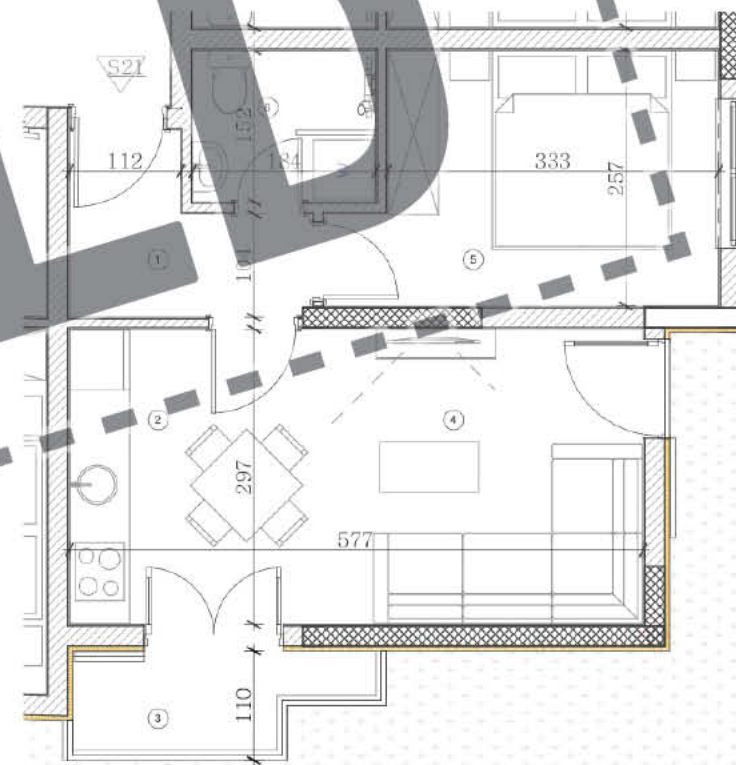
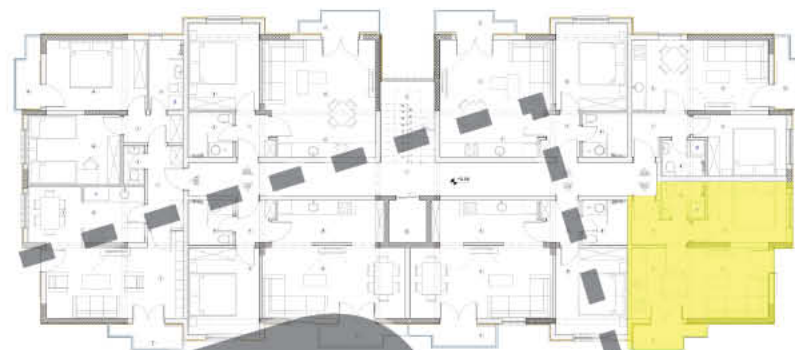
**Neto**  
**35,81m<sup>2</sup>**





- |                           |                     |
|---------------------------|---------------------|
| 1 Hodnik                  | 4,07m <sup>2</sup>  |
| 2 Kuhinja i<br>trpezarija | 7,11m <sup>2</sup>  |
| 3 Terasa                  | 2,73m <sup>2</sup>  |
| 4 Dnevna soba             | 10,17m <sup>2</sup> |
| 5 Spavaća soba            | 8,92m <sup>2</sup>  |
| 6 Kupatilo                | 2,81m <sup>2</sup>  |

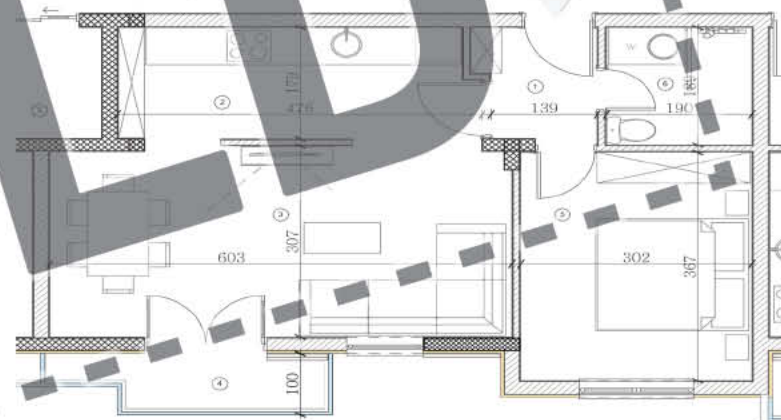
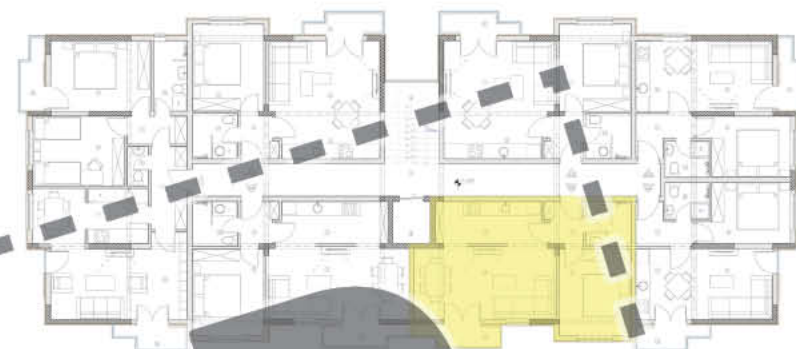
**Neto**  
**35,81m<sup>2</sup>**





- 1 Hodnik 2,99m<sup>2</sup>
- 2 Kuhinja 8,22m<sup>2</sup>
- 3 Trpezarija i dnevna soba 18,87m<sup>2</sup>
- 4 Terasa 3,01m<sup>2</sup>
- 5 Spavaća soba 11,39m<sup>2</sup>
- 6 Kupatilo 3,48m<sup>2</sup>

**Neto**  
**47,96m<sup>2</sup>**

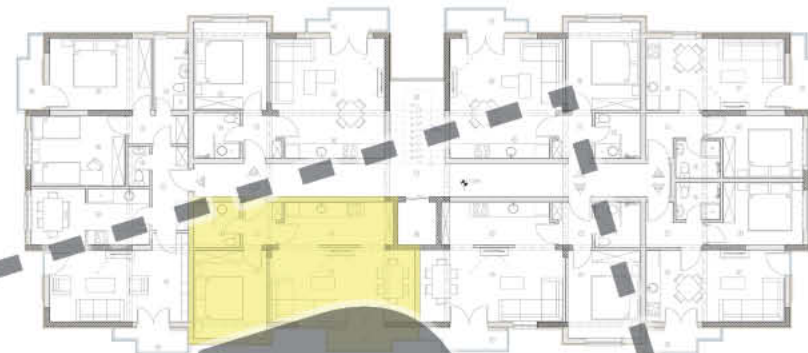


**OLD**

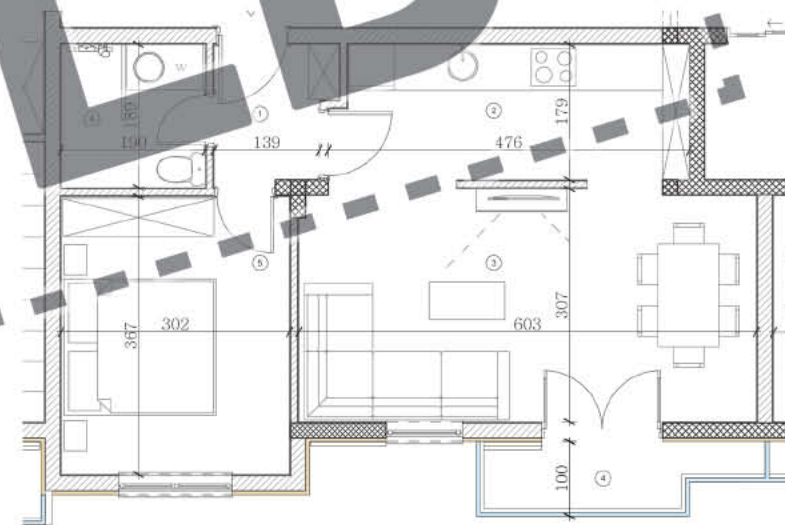


- 1 Hodnik 2,97m<sup>2</sup>
- 2 Kuhinja 8,21m<sup>2</sup>
- 3 Trpezarija i dnevna soba 18,84m<sup>2</sup>
- 4 Terasa 3,03m<sup>2</sup>
- 5 Spavaća soba 11,49m<sup>2</sup>
- 6 Kupatilo 3,47m<sup>2</sup>

**Neto**  
**48,01m<sup>2</sup>**



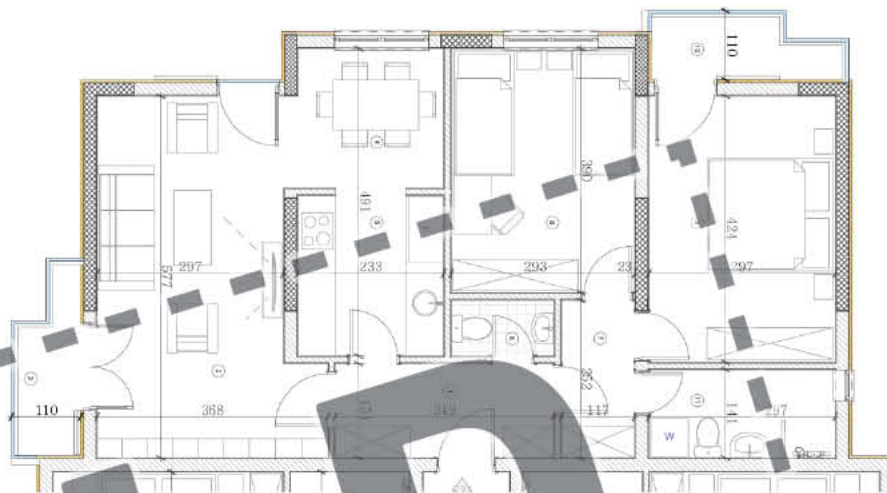
**3D**





- |                  |                     |
|------------------|---------------------|
| 1 Hodnik         | 5,73m <sup>2</sup>  |
| 2 Dnevna soba    | 18,50m <sup>2</sup> |
| 3 Terasa         | 2,73m <sup>2</sup>  |
| 4 Trpezarija     | 5,49m <sup>2</sup>  |
| 5 Kuhinja        | 6,17m <sup>2</sup>  |
| 6 Toalet         | 1,46m <sup>2</sup>  |
| 7 Degažman       | 3,36m <sup>2</sup>  |
| 8 Spavaća soba 1 | 11,39m <sup>2</sup> |
| 9 Spavaća soba 2 | 12,75m <sup>2</sup> |
| 10 Terasa        | 2,71m <sup>2</sup>  |
| 11 Kupatilo      | 4,16m <sup>2</sup>  |

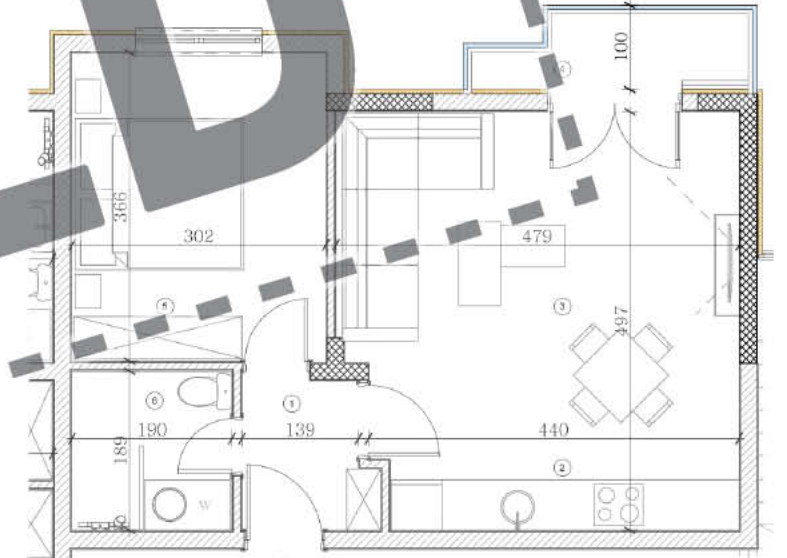
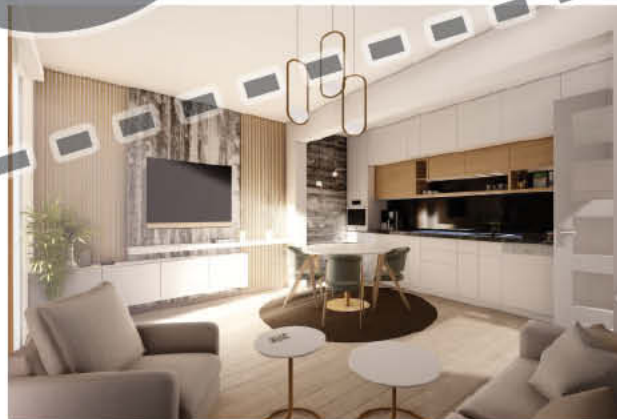
**Neto**  
**74,45m<sup>2</sup>**





- 1 Hodnik 3,09m<sup>2</sup>
- 2 Kuhinja 3,92m<sup>2</sup>
- 3 Trpezarija i dnevna soba 19,00m<sup>2</sup>
- 4 Terasa 2,74m<sup>2</sup>
- 5 Spavaća soba 11,40m<sup>2</sup>
- 6 Kupatilo 3,39m<sup>2</sup>

**Neto**  
**43,54m<sup>2</sup>**

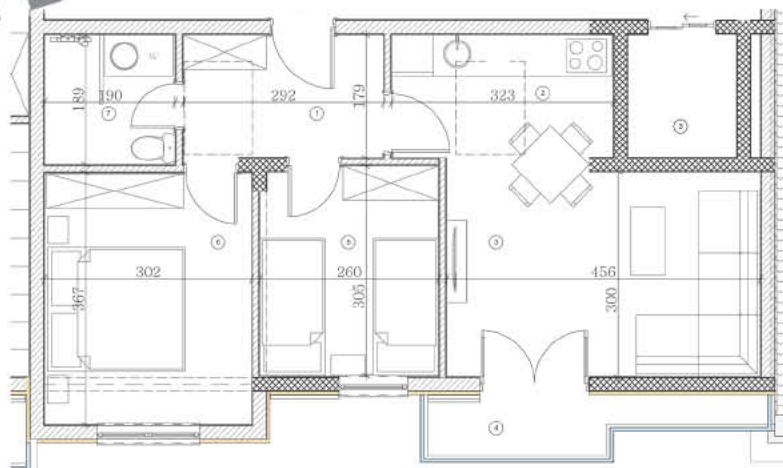


**SOLD**



- 1 Hodnik 5,60m<sup>2</sup>
- 2 Kuhinja 3,05m<sup>2</sup>
- 3 Trpezarija i dnevna soba 16,87m<sup>2</sup>
- 4 Terasa 3,57m<sup>2</sup>
- 5 Spavaća soba 1 7,92m<sup>2</sup>
- 6 Spavaća soba 2 11,34m<sup>2</sup>
- 7 Kupatilo 3,39m<sup>2</sup>

Neto  
**51,74m<sup>2</sup>**

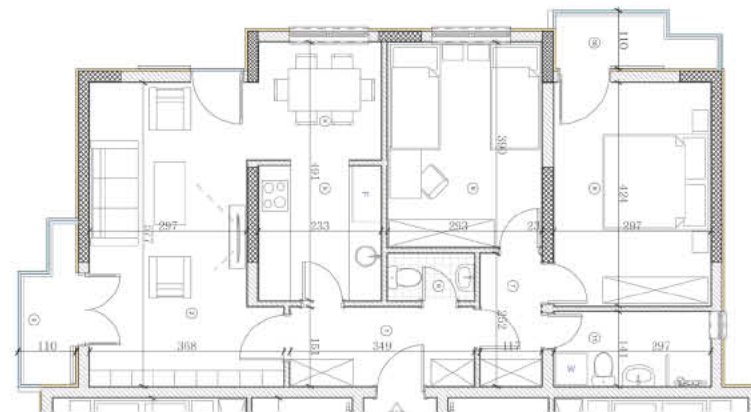






- |                  |                     |
|------------------|---------------------|
| 1 Hodnik         | 5,73m <sup>2</sup>  |
| 2 Dnevna soba    | 18,50m <sup>2</sup> |
| 3 Terasa         | 2,73m <sup>2</sup>  |
| 4 Trpezarija     | 5,49m <sup>2</sup>  |
| 5 Kuhinja        | 6,17m <sup>2</sup>  |
| 6 Toalet         | 1,46m <sup>2</sup>  |
| 7 Degažman       | 3,36m <sup>2</sup>  |
| 8 Spavaća soba 1 | 11,39m <sup>2</sup> |
| 9 Spavaća soba 2 | 12,75m <sup>2</sup> |
| 10 Terasa        | 2,71m <sup>2</sup>  |
| 11 Kupatilo      | 4,16m <sup>2</sup>  |

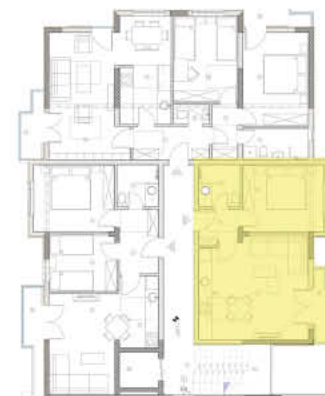
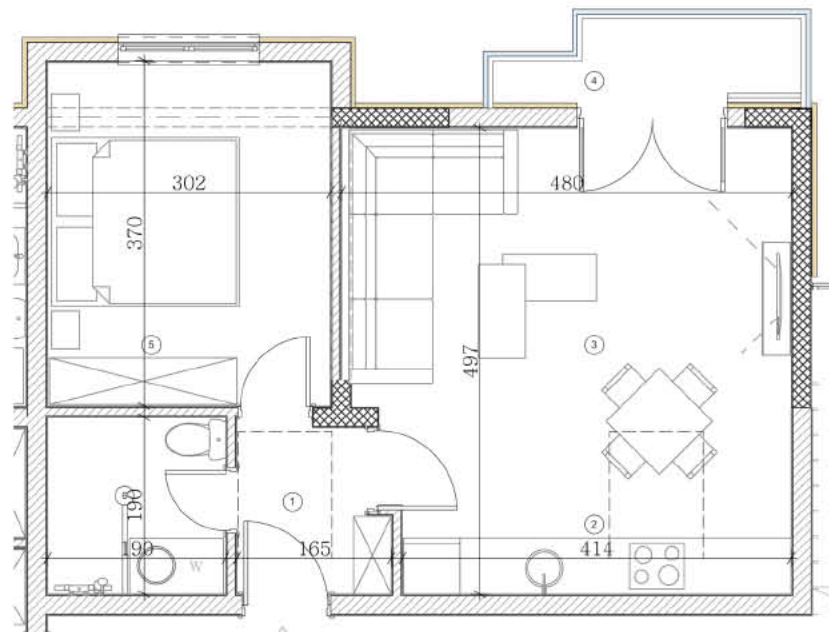
**Neto**  
**74,45m<sup>2</sup>**





- 1 Hodnik 3,09m<sup>2</sup>
- 2 Kuhinja 3,92m<sup>2</sup>
- 3 Trpezarija i dnevna soba 19,00m<sup>2</sup>
- 4 Terasa 2,74m<sup>2</sup>
- 5 Spavaća soba 11,40m<sup>2</sup>
- 6 Kupatilo 3,39m<sup>2</sup>

Neto  
43,54m<sup>2</sup>



**“Kvalitet ostaje dugo nakon zaboravljanja cijene”**

**Henry Royce** - britanski inženjer i osnivač Rollse-Royce-a